

Forward

GUIDE
DOGS



The official Guide Dogs magazine Spring/Summer 2018

the
DESIGN
MUSEUM

My Guide –

now for Friends

and Family!

Also inside:

+ Happy 75th
anniversary
Forward!



+ Learn about Guide
Dogs Week 2018

+ Helping people with sight
loss through technology

GUIDE
DOGS



**A year with me will make a lifetime of
difference to people living with sight loss.**

**Puppy walking is an essential element in the development
of a future guide dog.**

A volunteer puppy walker takes a puppy from six-weeks-old into their home and develops it for the first year of its life.

It takes a lot of time, commitment and love from both you and your family. The end result, however, is a very special animal and a life changed.

If you'd like to be a life changer, please visit our website to check we're recruiting puppy walkers near you:

www.guidedogs.org.uk/volunteering or call 0345 143 0191.

Regulars

- 5. Welcome from the CEO**
- 6. News**
Stories from across Guide Dogs
- 9. Celebrity round-up special**
A look at all the star support Guide Dogs has attracted



- 48. Caption competition**
What's Cody thinking?

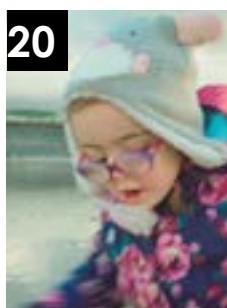
People and dogs

- 13. Who will you nominate for Guide Dogs' People Awards?**
- 18. We launch our Take The Lead campaign**
- 26. Thank you to our supporters**
- 30. We'll Never Forget**
- 34. In memory**
- 35. New partnerships**
- 48. Letters**

10



Features



- 10 Happy anniversary Forward magazine!**
We celebrate by catching up with guide dog owners from past editions

- 20 Meet Nell Sutton,**
whose mum made her a promise the night she was born

- 12 On the campaign trail**

- 14 Learn the latest about how we're improving our services** for people with sight loss

- 16 Tripping the tech fantastic** – a look at the technological initiatives Guide Dogs has been developing

- 23 Legacies** – celebrating the past and looking ahead to the future

- 25 A day in the life of ...** Lara Rivans, Guide Dogs' Head of Volunteering

- 29 Move it for Money** for Guide Dogs Week

- 24 Could you become a community fundraising co-ordinator?**

- 19 What's on** – dates for your diary

- 49 In good company**

Hear all about it!

Did you know that there's now a phone line you can call to hear all the latest news in your local mobility team's area as a recorded message?

The numbers are as follows:

Belfast: 0118 337 3801

Birmingham: 0118 337 3802

Cardiff: 0118 337 3803 (English)
or 0118 337 3821 (Welsh)

Central Midlands: 0118 337 3804

Edinburgh: 0118 337 3805

Exeter: 0118 337 3806

Glasgow: 0118 337 3807

Hull: 0118 337 3808

Leeds: 0118 337 3809

Liverpool: 0118 337 3810

London: 0118 337 3811

Maidstone: 0118 337 3812

Manchester: 0118 337 3813

Newcastle: 0118 337 3814

Nottingham: 0118 337 3815

Peterborough: 0118 337 3816

Reading: 0118 337 3817

Shrewsbury: 0118 337 3818

Southampton: 0118 337 3819

Welwyn Garden City:
0118 337 3820



Your phone provider's standard geographical rate will apply. These lines are due to be updated on Tuesday 3 July, Tuesday 30 October and Tuesday 22 January 2019.

Contributors:

Melissa Gerbaldi, Lucy Llewelyn, Annabel Williams, Jessica Leigh, Alice Hughes, Clare Hellery, Toby Carpenter, Liz Marshall, Hayley Price, James Kell and Sharne Kirkwood.

Designed by: The Design Studio

Contributions: Send items to Forward at the Central Office address or email forward@guidedogs.org.uk

Unfortunately, due to the volume of ideas we receive, we cannot acknowledge every item. We reserve the right to edit or refuse. Forward is available in Braille, large print, audio CD and online as audio and text files. It is also available as an accessible PDF from our website –

for this and mailing enquiries call **0800 953 0113**. You are receiving this copy of Forward magazine as one of our valuable supporters. If you no longer wish to receive it please contact us, call **0800 953 0113** or email forward@guidedogs.org.uk

Founding Editor: The late Captain Nikolai Liakhoff MBE FRZS

Registered Head Office:

The Guide Dogs for the Blind Association, Hillfields, Burghfield Common, Reading RG7 3YG
Tel: **0118 983 5555**
Fax: **0118 983 5433**
Web: guidedogs.org.uk
Email: guidedogs@guidedogs.org.uk

© 2010 Registered charity in England and Wales (209617) and in Scotland (SC038979)

Full colour advertising is available in Forward. For information on rates, publication dates and circulation, please call **0118 983 8295** or email forwardadvertising@guidedogs.org.uk. Terms and conditions apply.

Any products or services advertised in Forward by third parties are not in any way endorsed by Guide Dogs and Guide Dogs shall not be responsible for the accuracy of any information contained in such advertisements nor has it investigated or verified any of the information.

Chief Executive's welcome



Guide Dogs' strategy is evolving.

I would like to begin by picking up from the end of my last Forward greeting. I said how inspirational and life-changing the work of Guide Dogs is, and I am now pleased to introduce our new proposed strategy

with the ambition to reach many more people who are blind or partially sighted with our services.

To achieve this, we have been working with our trustees, and others with an interest in this charity, to update our strategy, and to ensure we have the best resources and plans in place to achieve everything we set out to do, with strong measures to track our progress. This will be our strategy for the next five years and it's obviously important we get it right so we have been engaging with staff, volunteers and those who use our services to get feedback. We need to be confident that it will take us to where we need

to be as an organisation and most importantly, to provide the best long-term support for our beneficiaries.

Another way we are evolving and innovating is by being more involved with technology than ever before. Turn to pages 16 and 17 to read about some of the wonderful projects we are part of, including making this magazine available on Amazon's virtual assistant, Alexa.

Speaking of technology, don't forget that you can keep up with the very latest on what I am up to on Twitter – my handle is @tomwrightuk.

With best wishes,

Tom Wright CBE
Chief Executive
Guide Dogs

Changes to Forward magazine

This is the first edition of Forward this year – as detailed in the Autumn 2017 issue, Forward is now published twice a year. The spring/summer edition is out in late June, and the autumn/winter edition is out in late November.

You'll also find the New Partnerships section only in the online edition (at guidedogs.org.uk/forward), and the final ever We'll Never Forget section is also in the digital edition of this issue. From now on, we have a free online

Book of Remembrance at guidedogs.org.uk/neverforget, where contributors will not be limited to the length of tribute they can post, and the tribute can appear immediately for sharing with friends and family. If you'd like to have your dog featured, please contact our Supporter Care team on **0800 953 0113** or giftsinmemory@guidedogs.org.uk.

Finally, we've evolved our printed local mobility team newsletters, which were

sent out with Forward, into quarterly e-newsletters and a phone line (see opposite page).

These changes are saving Guide Dogs around £130,000 each year in print and production costs – a huge cost saving that can go back into providing services for people with sight loss. We've also used the changes as an opportunity to improve the news and features about all the goings on at Guide Dogs. We hope you enjoy your new-look magazine!

Thinking outside the box to make entertainment accessible



Last year, we helped Virgin Atlantic and a technology firm called Bluebox Aviation Systems to develop an in-flight entertainment system accessible to people with sight loss. The system, loaded onto an iPad, became available on all Virgin Atlantic flights in early December, after guide dog owners living near the airline's headquarters at Gatwick Airport tested and gave feedback on various prototypes. The iPads contain an exact replica of the entertainment system available for sighted passengers in the back of a plane seat, complete with high-contrast menus and audio description. In April, Bluebox won a Crystal Cabin Award for their work – the world's most highly regarded prize for aircraft interiors.

Everest trekkers reach new heights

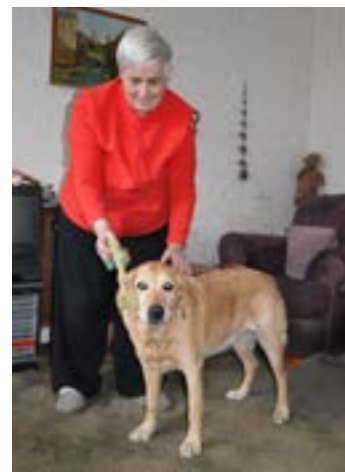
Last year, an intrepid team of volunteers trekked to Everest Base Camp in Nepal in aid of Guide Dogs. To date, they have raised a staggering **£30,500**, and five of the puppies they have named are currently being puppy walked in Northern Ireland. Excitingly, at the time of writing, the soft toy mascot they took with them (called Hillary) is on his way back to the summit in the safe hands of a sherpa! You can follow his adventures on Facebook by joining the group 'Hillary Guide Dog Puppy In Training Northern Ireland'.



Yellow Labrador Vera is the fifth Everest pup to be named by the Everest trekkers.

Celebrating half-a-century of guide dog ownership

April Fool's Day marked 50 years since Eleanor Lindsay, from Lanarkshire in Scotland, received that all-important phone call from Guide Dogs to say there was a dog available for her. Eleanor, who's been completely blind since birth, said her mother thought it was a joke until the then 17-year-old started packing. Thanks to her new guide dog partnership, Eleanor quickly found the freedom to get to the shops, to church, and to lead an active social life. She's had a total of six guide dogs, and is currently working with yellow Labrador/golden retriever, Erica. Eleanor said: "All the dogs have had different personalities. It's hard to pick a favourite!"





Great British Dog Survey

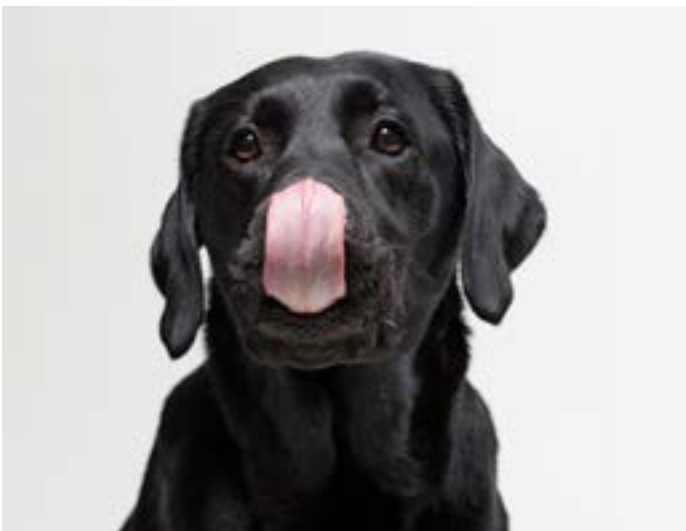


As a supporter of Guide Dogs, we're sure you love dogs just as much as we do, so why not take part in the Great British Dog Survey this summer and put your pooch on the map? By completing our survey, you'll be entered into a free prize draw to win some dog-related prizes including a £200 Pets at Home hamper to treat your four-legged friend (T&Cs apply). We'll be painting a portrait of Britain as we find out about our doggy masterminds and the cheeky habits of our nation's best friends. Are soft toys still the favourite, or could the good old-fashioned ball take the number one toy spot this year? Have your say today at dogsurvey.org.uk.

Fundraising for Guide Dogs leads to true love



Pam Moore Kerr and Paul Kerr, from Glasgow, recently celebrated their first wedding anniversary after meeting through their local fundraising group. Paul said: "When I qualified with Lester in August 2014, someone predicted there would be a woman in my life within the next year, but I didn't believe them. Then I started volunteering and met Pam and her guide dog, Eddy. We clicked right away and I can't imagine life without her now." Pam added: "We must thank Guide Dogs for bringing us together – however unintentional it was!"



Well done to Dr Whiteside...

Guide Dogs' Canine Research Associate, Dr Helen Whiteside, has been named as making the Charitable Contribution of the Year by the judges at this year's Ceva Animal Welfare Awards. The awards, held in Birmingham in April, celebrate the achievements of those who go above and beyond to better the lives of animals around the world.

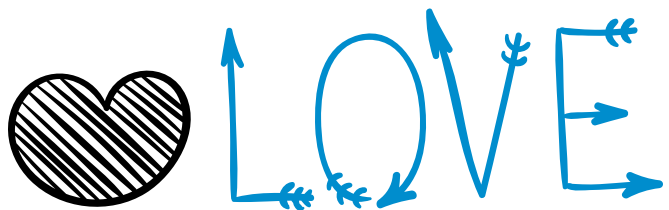
Helen is gaining prominence in her role as our canine behaviour expert in a wide variety of forums, working tirelessly in both her personal and professional life to promote and improve the welfare of dogs across the globe. At Guide Dogs, she has instigated cultural change ensuring dog welfare remains at the heart of everything we do.



Congratulations

Dr Clarke!

Guide dog owner, Nick Clarke, was awarded the CBE in the Queen's Birthday Honours last summer for services to the NHS. Dr Clarke, from Holmfirth in West Yorkshire, is Head of Challenged Provider Policy at NHS Improvement, the national regulator that supports NHS and Foundation Trusts to give patients safe, high-quality and compassionate care. Dr Clarke took along his guide dog, black labrador Eva, to his investiture, which was with Prince Charles at Buckingham Palace in February.



First Blind Dates

takes bronze



A video by Guide Dogs promoting Guide Dogs Week 2017 won a bronze award in this year's Charity Film Awards. The video, First Blind Dates, shows four guide dog owners meeting someone for the first time at a London restaurant and talking about living with sight loss and having a guide dog. You can read more about Guide Dogs Week 2018 on page 29.

Find out who won a Local Volunteer Award

In early June, we celebrated Volunteers' Week by hosting Local Volunteer Awards ceremonies throughout the UK. Congratulations to everyone who was nominated for an award, we hope you enjoyed your time celebrating. If you would like to see a list of winners and photos from all our events, please visit our website - guidedogs.org.uk/localawards. You can also nominate a Guide Dogs staff member for a People Award – find out how on page 13.



Star news

Since your last issue of Forward magazine, our celebrity ambassadors and supporters have had lots to celebrate!



Big Brother finalist

Congratulations to our ambassador Jess Impiazzi for reaching the final of Channel 5's Celebrity Big Brother in February.



A few days after she left the Big Brother house, she couldn't wait to visit us at the National Breeding Centre, with her mum Debbie and Debbie's guide dog Kacey.

Commenting on their visit, Jess said "It was the best experience of my life, anyone who feels sad should spend the day here. It's wonderful what these puppies will go on to do. They are extra special puppies."

Jess and fellow housemate Ashley James have also sponsored puppy Alfie.

small insight into navigating the world with sight loss.

James said: "I was tentative to start with, but he's so in control of you and you've just got to relax and trust that you can take big strides and move quickly. Upton looks after you like a dream; it's so clever what he does."



James was inspired to arrange the visit after his Wasps team mates Danny Cipriani and Elliot Daly recently met staff for their own private tour of the centre.



Life-changing partnership

Our congratulations also go to supporters England rugby player James Haskell and fitness expert Chloe Madeley, who have recently become engaged!



The couple visited our National Breeding Centre in November last year, where they were 'swarmed' by an adorable litter of black Labrador retriever puppies in the puppy socialisation area.



They both tried a blindfold walk around an obstacle course with demonstration dog Upton to gain a

TOWIE star Pete Wicks falls in love with blonde beauty

Pete Wicks, star of The Only Way is Essex, said he had an "amazing morning" with his "beautiful friend" Luna at the Guide Dogs Redbridge Training School in Essex, in November.



He was delighted to be reunited with the ITV This Morning puppy, who he first met at the Guide Dogs Annual Awards.

He wore a blindfold for Luna's first ever obstacle course walk.

"Luna is doing so well," he said after completing the walk. "It's amazing how you feel like one unit when you walk with a guide dog. I can't imagine how people cope with sight loss without a dog."



Happy 75th anniversary **Forward!**

Forward began as an annual publication in 1943. Since then, both the magazine and Guide Dogs have been through many changes. What remains the same, however, are the inspirational stories behind each guide dog partnership. In this feature, we celebrate Forward's 75th anniversary by catching up with four guide dog owners who starred in past editions and ask: where are they now?



"I applied to shut him up and got the job!"

From assistant producer on radio features, Ian has become a respected BBC news presenter on both radio and TV. He's appeared on Radio 4's In Touch, presents BBC One's Reporting Scotland and also makes documentaries.

His seven guide dogs have been a real asset in his work as well as giving him independence. "They're a great calmer when people are stressed, and that includes politicians!" he explains. "People pour their heart out to you because of the dog being there."

March 1997: **Edris Miller**

A lot has changed since Edris and her daughter Naomi posed together (pictured right) for one of a set of posters Guide Dogs created to change the perception of guide dog owners. Not least of which, the little girl in the poster has grown up to become a professional singer and dancer. "I spent a lot of my life waiting with my guide dogs for Naomi at dance schools," Edris laughs. "But now she's been on tour with Paloma Faith. I'm so proud of her."

Edris has been busy herself too. She's set up her own gym and wellness centre, which caters specifically for people who might find a mainstream gym too challenging. "I absolutely love it," she says. "I've always enjoyed working with people and I love seeing them getting something out of it."

March 1988: **Ian Hamilton**

30 years ago, Ian was a professional artist but, as his sight continued to deteriorate, it became impossible to continue. "A friend kept nagging me to apply for a job at the BBC as they were looking for staff with disabilities," Ian explains.

Summer 2011: Graham Waspe

Seven years on and the media attention given to Graham's story is only just dying down. After his guide dog Edward had to have both eyes removed due to an extremely rare form of glaucoma, everyone assumed (incorrectly!) that his new guide dog Opal was guiding both Edward and Graham. Overnight, they became local, national and international celebrities.

"It was exhausting," says Graham's wife Sandra, "but Edward adored the attention – and we raised a lot of money too." The local fundraising branch worked with Specsavers and raised enough to name a puppy – Edward, of course. Edward and Opal appeared in the 2012 veterinary services company Heska's calendar, were presented with an Endal Award for dog heroes, and most recently their story was published in American science writer and author Jennifer S Holland's 'Unlikely Friendships: Dogs'.

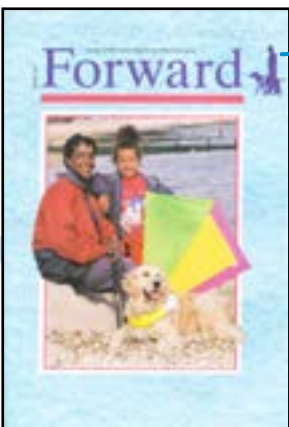
Sadly, Edward passed away in August 2016. "Everybody loved him," says Sandra. "He was a super dog."



Winter 2006:

Catriona Wilson

After winning Guide Dogs' Life Changing Guide Dog of the Year in 2006, Ike remained Catriona's guide until the age of 12, unusually old for a guide dog. "He was a hero," says Catriona, pictured above. "He'd had cancer but still wanted to keep working." She's now partnered with Kiesha, who goes everywhere with her. Catriona's a speaker for Guide Dogs, flies up to Scotland to visit her father and continues to study for qualifications in treatments such as reiki and sports massage. It seems fitting that it should be Catriona who has won an award recently – a South West Excellence in Business Training Individual Achievement Award 2018, for her work as a therapist in a local hotel. Congratulations Catriona!





On the campaign trail

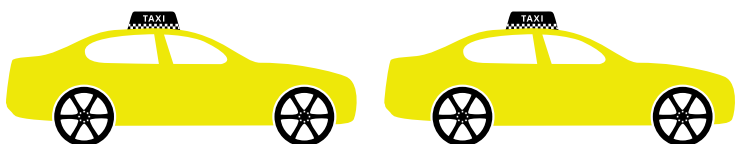
In April, Guide Dogs' Campaigns team hosted a major week-long event in Parliament for our Streets Ahead campaign. With 97% of guide dog owners still facing issues with obstructions in the street, especially cars parked on pavements, the team created an interactive streetscape in the middle of Parliament. It had everything from overhanging trees to a real pavement-parked car, so visiting MPs could experience some of the challenges people with sight loss face.

Our Access All Areas campaign has also been moving forward. Being refused the use of a minicab or taxi is a stressful, embarrassing and isolating experience for guide dog owners, yet 42% of assistance dog owners have been illegally refused access because of their dog. More than 46,000 people signed our petition calling for Disability Equality Training for minicab and taxi drivers. To highlight this to Government, the Campaigns team were joined by Andrew Gwynne MP, who sponsored the original Bill in Parliament highlighting the issue, plus volunteer campaigner Sally and her guide dog, Yoko. Together they delivered a box of stress-toy cars to Transport Secretary Chris Grayling at the Department for Transport. To remind Mr Grayling of the 42% of guide dog owners still being turned away by minicabs and taxis, 42% of the toy cars were yellow.



Finally, the team's been making a noise about our Safe and Sound campaign, to make sure that quiet electric and hybrid cars are safe for people with sight loss.

Back in 2014, we won a campaign that will require new models of quiet cars to be fitted with sound generators from July 2019. In February, thousands of our supporters signed the petition the team launched, calling on car manufacturers to tell us what they're doing to make quiet cars safe. This July, with one year to go to the deadline, we'll deliver the petition to car manufacturers.



Guide Dogs' People Awards

Our People Awards celebrate the fabulous contribution made to Guide Dogs' work by our staff and volunteers and, for the first time, this year we are excited to announce we will also be recognising the incredibly inspirational people who use our services at the same event.

We would love to hear from you if you know a Guide Dogs staff member, or someone who uses our services, who you think would make a worthy winner.

For further details of the categories and to make your nomination, please visit guidedogs.org.uk/peopleawards. Nominations close at noon on Friday 3 August 2018. The awards will be held on Friday 2 November at our Atherton Training School near Manchester.

We already have our shortlist of fantastic volunteers from the winners of June's Local Volunteer Awards (see the news section).

Our service user award categories are:

- Inspirational Guide Dog Owner of the Year
- Guide Dog of the Year
- My Guide Partnership
- Young Person's Achievement



Overall Volunteer of the Year 2017, Alan Fletcher, with his guide dog, Nutmeg.

Our staff award categories are based on our six organisational values:

- Customer Focused
- Trustworthy
- Maximising Impact
- Dedicated to Superior Quality
- Passionate and Determined
- Inclusive and Embracing



Tom Wright, Chief Executive, presenting Gill Jones, Overall Staff Winner 2017, with her trophy.

On these pages, we bring you some updates about the services we offer to help people with sight loss to make sure they're not left out of life...

My Guide – now for Friends and Family!

My Guide is one of Guide Dogs' fastest-growing services. It helps people with sight loss get out of their homes and back into the community with one of our fantastic volunteers as their sighted guide.

My Guide has been running since 2012 and helps people navigate their local area with confidence as well as improve their fitness, access services near them, gain confidence getting public transport and engage with their local community.

Now, we train family members and friends too. Those closest to someone who's blind or partially sighted care about them the most, but often aren't sure how to safely and effectively guide their friends and family members. Guide Dogs offers this sighted guiding training for free to friends and family, so they can better understand sight conditions and support the needs of their loved one.

One My Guide service user said:

“I can't get my sight back but the friends and family course has started me having my family back. I am starting to feel like a mum first, then a blind person, and that's wonderful.”

To find out more about Friends and Family training, contact your local mobility team.



The moment it clicks – using **Positive Reinforcement Training** to create stronger partnerships.



Most people involved with Guide Dogs will tell you that the question they get asked more than any other is “How do you train the dogs?” And it’s easy to see why when you compare a high-energy, gangly pup to an adult dog in harness, carefully guiding its owner through a busy street.

Guide Dogs has always used the principles of Positive Reinforcement Training (PRT), a training philosophy which uses praise and rewards to teach the right behaviour. As an organisation, we are committed to using this as the best way to train our life-changing dogs. It helps build the unique bond of trust between a guide dog and its handler, and means that our dogs are relaxed, happy and confident in their work. We are now standardising this training, and using clickers – hand-held boxes which make a distinctive clicking sound when pressed. These mark the behaviour, helping the dog understand exactly what they’re being rewarded for.

We caught up with Guide Dog Mobility Instructor James Booker to explain more about training a guide dog using PRT. James said: “When you’re working with a dog and using PRT, timing is key. We’re looking to encourage desirable behaviour and then mark that behaviour and reward it, so the dog chooses to do it again.

“So if you’re teaching a sit, you click at the exact second the dog sits. The treat or reward might arrive a couple of seconds later, but because of the clicker, you’re both clear about what the treat’s being given for!”

“And you can’t deny it’s really good fun – the dogs want to do it, and you can see the progress in every session. With this method we are helping dogs to make the right decisions in their work, which makes for partnerships which are stronger than ever.”

This way of training is a winner with guide dog owners too. Newly qualified owner Nicola Lairdon said: “I had a wonderful bond with my first dog, Onnie, but sadly she passed away last year. I trained with my new dog Willow using PRT, and we trusted each other really quickly. I think that was down to the structure of the training. Willow really wants to please me because she wants the reward!”

Tripping the tech

fantastic!

Here at Guide Dogs, we're forever looking for new ways to enable people with sight loss to move around safely and confidently, so they can feel part of life. More and more, technology is playing a part in helping us do this, and here we detail some of the fantastic projects we're involved with.

If you have sight loss and you'd like to volunteer to be a part of future similar initiatives, we would like to hear from you. Contact TechVolunteering@guidedogs.org.uk

Microsoft Soundscape – opening up the world with sound

If you're living with sight loss, exploring towns and cities with confidence can be daunting. Choosing where to go and what to do is an impossible dream for too many people. The Microsoft Soundscape app, developed in collaboration with Guide Dogs, could change that for many people who are blind or partially sighted.

Launched in March, the app makes it easier for many people to explore the world around them. It combines 3D audio that paints a picture of your surroundings with local information, making it easier for you to get where you want to go.

Guide Dogs worked closely with Microsoft to influence the design of the app. In this unique project, people with sight loss were consulted at every stage of its development and involved in testing the technology.

Technology like Soundscape has huge potential to empower people with

vision impairments, making it possible to explore towns and cities with confidence.

Soundscape is available for free on iOS and iPhone. If you would like to try it, you can download it on the iTunes app store via the link tinyurl.com/y8jlemfx.



Seeing things differently with Seeing AI

Guide Dogs is a big fan of another Microsoft app called Seeing AI, which is available now for iOS devices. The app, which is free, uses artificial intelligence to describe to people with sight loss what's in the world around them. The app uses a phone or tablet's camera to 'see' objects, and then converts what it sees into an audio description. Seeing AI, an ongoing research project by Microsoft, has been created to enable people who are blind or partially sighted

to complete everyday tasks with increased independence. One of the clever ways the app can help is by speaking text as soon as it 'sees' it with the camera. It can also scan barcodes and give users a product's name and related information, and allow users to save their friends' faces in their contact list so they can be recognised. The app can even describe images shown in other apps such as Twitter or photos from emails.



Going contactless at Crufts

At Crufts in March, Guide Dogs tried something the charity had never done before. We fitted two fundraising dog jackets with a contactless bank card reader, allowing visitors to donate to Guide Dogs even if they didn't have any change. This new method of giving proved so popular at this and other events that five volunteer fundraising groups – Chesterfield, Wakefield and Pontefract, Lincoln, Leeds and Coventry – were given similar devices to trial over the spring and early summer for donations and trading. If all goes well, we will roll these out further later this

year, giving us the ability to fundraise in a variety of new and exciting ways.

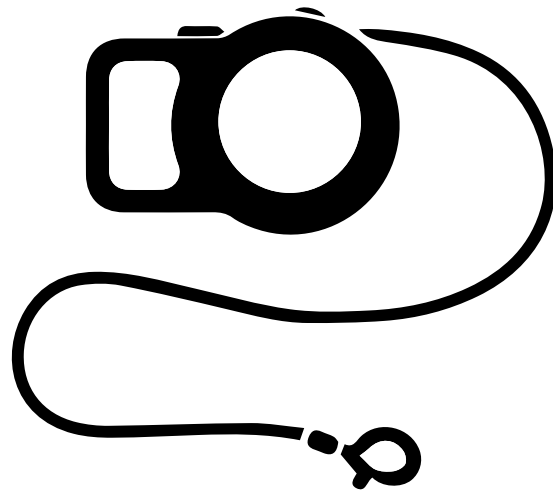


A new way to listen to Forward magazine

If you have an Amazon Echo, you may soon be able to listen to Forward magazine on your device. Guide Dogs is currently experimenting with getting the charity's flagship magazine added to the voice-activated virtual assistant, giving people with sight loss another way to access the latest edition. We will of course update you as and when there is progress on this.

Take The Lead

In April we launched Take The Lead, an initiative encouraging responsible ownership among the nation's pet dog owners to help prevent attacks on guide dogs.



Our research revealed that 12 of our guide dogs (which includes working guide dogs, guide dogs in training, retired guide dogs, breeding guide dogs and guide dog puppies) were attacked each month, with most incidents happening when attacking dogs were off the lead. We decided to call on pet dog owners for help, asking them to put their dog on a lead when they see a guide dog working.

Guide dog owner Rose Hill said: "Last year my guide dog, Ushi, was attacked when we were out on our first walk together. It was meant to be an exciting day but it was ruined by the horrible ordeal. This incident, that's had a lasting impact on both me and Ushi, could have been so easily avoided if the attacking dog had been on a lead."

A pet dog on the lead allows for more control over the situation, and could reduce the chance of guide dogs being distracted from their important jobs.

Guide Dogs' Canine Researcher, Rachel Moxon, shares some useful tips for potential pet dog owners:

- Before buying any dog, do your research, find a breed best-suited to your lifestyle.
- Only ever buy from a reputable breeder or animal shelter.
- Seek advice on how to appropriately socialise your dog from a young age with people and other dogs.
- Keep control of your dog in public places.
- Make sure your dog is on a lead when you see a guide dog working.

To watch a short animation we've created for Take The Lead and share it on social media, go to tinyurl.com/y7qpas2y.



If you're out with one of our guide dogs, try remaining relaxed around other dogs. Don't tighten your grip on the lead or harness and, if possible, provide the dog with a positive experience on passing other dogs (a treat or praise). Individuals who experience an attack on their guide dog should report the incident to the police and their local mobility team, who will provide support.

What's on

30

Dates for your diary

- Coniston Challenge, Lake District – **15 September**
- Use Your Senses Glasgow – **22 September**
- Guide Dogs Week, UK-wide – **6-14 October**
(go to page 29 for more information)
- Bournemouth Marathon, Dorset – **7 October**
- Royal Parks Half Marathon, London – **14 October**
- Yorkshire Marathon – **14 October**
- Use Your Senses Birmingham – **20 October**
- Use Your Senses Manchester – **9 December**
- Christmas Wishes Concert, Coventry Cathedral –
17 December (see below for more information)



If you have any questions about taking part in any of the sporting events above, or about volunteering at a sporting event, don't hesitate to get in touch. Our office hours are Monday to Friday, 9am-5pm. Email events@guidedogs.org.uk, or call **0345 143 0200**.

Save the date!

**Guide Dogs Christmas
Wishes Concert**
Monday 17 December 2018
At the beautiful Coventry Cathedral

Pop this date in your diary to celebrate Christmas with Guide Dogs. Enjoy a whole host of special guests and performances as well as carols to sing along to.

Tickets will be on sale in the summer. Please email events@guidedogs.org.uk if you would like us to notify you when tickets are available.

GUIDE
DOGS

Nell's story



On the night Nell Sutton was born, when visitors had gone home and the hospital ward was quiet, her mum Rachel whispered a promise to her new-born baby girl.

Rachel had just been given the devastating news that Nell was blind. Rachel had been prepared for the possibility that Nell could be born with glaucoma, like her dad Paul, but it still came as a hammer blow when doctors confirmed the worst.

Nobody knew exactly how much vision Nell had, so as all the questions about her daughter's future raced through her mind, Rachel made her a promise. She said: "It was just me and her, and I promised Nell that she would be able to do whatever she wanted to do in life."

Nell's diagnosis was hard enough to deal with, but even more heart-breaking for Rachel and Paul was the fact that she was also in constant pain. It wasn't for another six months and numerous operations later that they began to see a smiling, laughing, happy little girl, free from agony.

But Nell had lost sight completely in one eye and had little vision in the other, so Rachel and Paul's thoughts now turned to her future. No-one knew the challenges that lay ahead for Nell more than Paul, who lost his sight to glaucoma in his teens.

At a hospital in Birmingham, consultants said the complexities of Nell's eye condition made her one in six billion. While she had some vision in one eye, they had no idea how it would respond to each operation and how stable her eyesight would be as she grew up. They still don't, and this uncertainty is just another thing the family are dealing with every day.

When Nell was 18 months old, she met Branwen Jones for the first time, after being introduced by a local teacher for children with sight loss. Branwen, a mobility expert from Guide Dogs, was the first specialist support the family had received.

"Branwen was like a breath of fresh air," says Rachel, "she was just so positive about what Nell could do. She gave us all a huge boost."

Nell was showing the aptitude to begin learning how to use a cane and she was keen to have one 'just like Daddy's', so the work started in earnest.

Branwen began by teaching Nell routes close to home: to their neighbour Garth's house, to the post box at the end of the



road, then to the bus stop so Nell could meet her beloved big brother Isaac when he came home from school and, her favourite route of all, to the park.

Branwen watches Nell carefully on her routes and observes her development through play. When Nell starts nursery school, Branwen will be there to help her acclimatise and learn her way around.

“Nell is an amazing little girl”, says Branwen, “and the whole family are fantastic. We are able to provide training as she grows which will help her become as independent as possible. Nell is quite young to be using a cane, but she was showing all the right

skills so I thought ‘why not give it a go?’, and she’s getting pretty good now.”

Because of Nell’s growing confidence, she can do so many of the things that toddlers her age love, like having a run-around on the beach, going swimming, and to local play groups with other young children. None of this would be possible without the vital support that Branwen has provided.

As for the future, the Suttons take it one day at a time. They know there are likely to be more operations in store for Nell as she gets older, but for now they are simply enjoying the progress she’s making. (Cont over)



“Rachel said: “Guide Dogs has been an amazing support to us and Nell. We got her the help she needed early and she’s already incredibly independent as a result. She’s a bottle of pop and nothing stops her!”



Nell now wears glasses, which help make the most of her vision. Rachel gets emotional when she remembers the first time Nell was able to see the Tellytubby, Po, on TV and went straight up to him, pointing at the screen.

Nell may even go on to become a guide dog owner in the future and, if she does, the vital skills, confidence and independence she is learning with Branwen in her first routes out of the house will have been the starting point for another amazing partnership in her life.



Has your child received a recent sight loss diagnosis?

Guide Dogs provides a range of guidance and services for children with sight loss and their families. These services help with education and family support, mobility and independence skills training, bespoke large-print books, technology, grants, and family events.

If you need support for a child or young person with sight loss, call us free on **0800 781 1444** (Mondays to Fridays, 9am-5pm, except bank holidays), email **cypservices@guidedogs.org.uk** or visit **guidedogs.org.uk/cyp**.



Celebrating the past and looking ahead to the future



This brilliant image of a woman and her guide dog in London in 1958 is a wonderful reminder that Guide Dogs has been helping people with sight loss live the life that's right for them for almost 90 years.

Since this picture was taken, Guide Dogs has been able to grow and help more and more people. In the 1960s the breeding programme was only just beginning; today we breed around 1,300 pups every year!

Gifts in Wills help to provide the guide dogs of the future. As the number of people with sight loss in the UK is set to double by 2050, these special gifts will make sure Guide Dogs is there to support them.

People choose to leave a gift in their Will for all sorts of reasons, and each gift will make a real difference.

To find out more about gifts in Wills please call **0800 953 0113** or visit guidedogs.org.uk/giftsinwills.

Name a Puppy, change a life!

Thanks to the generous supporters and organisations who fundraise enough to name a guide dog puppy, guide dog owners like Robert Blackwood can enjoy "independence, mobility and the self-esteem to get out and about".

Robert, from Ayrshire in Scotland, is partnered with his fifth guide dog, Jasper, who was named by a branch of Sainsbury's in Edinburgh. Father-of-two Robert was born with premature retinopathy, and has just 3% of useful vision. He said: "I can't express how thankful I am not only to the staff at Sainsbury's Blackhall, but to everyone who raises money towards Name a Puppy. Thank you for setting these pups off on their journey to become life-changing guide dogs and companions for people like me.

"Put simply, Jasper gives me the independence, mobility and the crucially important self-esteem that I need to get out and about. If I didn't have my guide dog, I'm confident I wouldn't leave my house."

To find out more about how you could Name a Puppy, visit guidedogs.org.uk/how-you-can-help/donating/name-a-puppy or email nameapuppy@guidedogs.org.uk.



Trade up your role to individual community fundraising co-ordinator!

Guide Dogs is looking for more volunteers to become community fundraising co-ordinators across the UK. The role involves selling Guide Dogs-branded merchandise at various events and places, with all proceeds going towards our life-changing work.

While most volunteers think they have to be part of a fundraising group to trade and fundraise for Guide Dogs, the role of community fundraising co-ordinator is for individuals who may not want to be part of a group.

Successful Individual Community Fundraising Co-ordinator Sue Hugenoltz Reed says her favourite part of the role is seeing the delight on children's faces when they dig deep into her tombola bucket and win a soft toy puppy.

Sue said: "I used to free run a guide dog for an 86-year-old lady, but sadly she passed away so I adopted her guide dog. It was then that I decided to try another volunteering role.

"I've since retired to Northumberland, where I knew I could trade Guide Dogs' merchandise to visitors and residents in village halls and local country events. The Community Fundraisers at the Newcastle Mobility Team gave me some brilliant training and back up and then I was off!

"A table big or small in a village hall coffee morning, fair or pop-up market is likely to be welcomed. I've never been charged for a table as Guide Dogs is such a well-respected charity. I have watched and learned, laughed and made many friends – I wouldn't have missed it for the world. Why not come and join in?"

As well as trading, there are many other ways that you can join the fundraising group family as an individual. Perhaps organising annual events such as blind skittles, open gardens or dine in the dark? With our support and great packs, we're confident you'll have a brilliant time bringing everyone together for our cause.

If you would like to become an individual community fundraising co-ordinator like Sue,

contact our volunteering office on

0345 1430191



A day in the life of...

Head of Volunteering

Lara Rivans

Working at Guide Dogs has been a great way of combining two causes Lara is passionate about – sight loss and volunteering.

Having always worked in the voluntary sector, Lara has seen the difference volunteering makes, both to the volunteer and to the person we support. And as her mother and aunt both have vision impairments, she jumped at the chance to join Guide Dogs as a Regional Volunteering Adviser in 2004.

Lara became Head of Volunteering in 2012, based mostly at home in Edinburgh.

“My team are all over the country so we have a video call each Monday, and a lot of my meetings are on Skype,” she explains. “It’s a very cost-effective way of working thanks to technology.”

Much of her work is at a strategic level, for example ensuring best practice and standardisation across the organisation, keeping abreast of trends and listening and responding to regional needs. “The key,” she says, “is to ensure we make volunteering a great experience. Our volunteering managers, like Puppy Walking Supervisors, need to embrace, nurture and engage with their volunteers.”

Lara also sets the direction for longer term projects, a key one last year resulting in Guide Dogs achieving the Investing in Volunteers Quality Standard. “I’m really



proud of that,” she says, “because it shows our commitment to our volunteers.” A project for the future is to look at how Guide Dogs can create volunteering opportunities for a younger demographic, people who may have less time but want to get involved.

Unfortunately, Lara doesn’t often get to meet many of our 16,500 volunteers, which is why she loves national Volunteers’ Week in early June. “It’s the best part of the role because you get to meet people, hear their stories of why they volunteer and celebrate the difference they make.”

If you’re interested in finding out more about volunteering for Guide Dogs, visit [guidedogs.org.uk/volunteering](https://www.guidedogs.org.uk/volunteering).



Thank you to our supporters

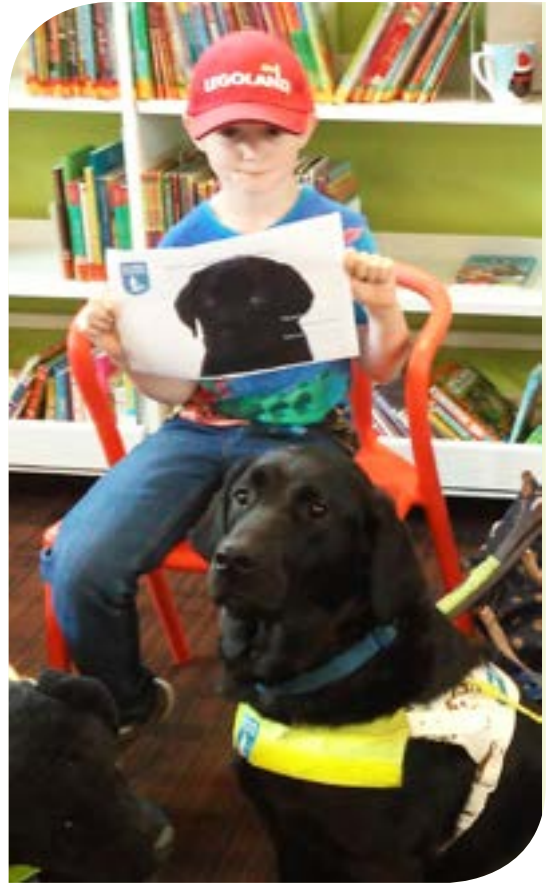
Dear supporters,

Thank you so much for everything you're doing to help us make sure that people with sight loss can move around safely and confidently, and get out of their homes and live their lives the way they choose. We simply couldn't do it without your support.

Whether you're young like Jacob Davis, whose sterling work to collect five pence pieces is much appreciated, or if you have incredible tenacity like Beryl Hope, who's collected nearly 15 tonnes of milk bottle lids, I hope the sun is shining on your fundraising efforts wherever you are this summer.

Maria

Maria Novell
Director of Fundraising



Seven-year-old **Jacob Davis** learnt about Guide Dogs through his uncle and aunt and has been collecting five pence pieces in a cardboard kennel, enough to donate **£40!** He also sponsors guide dog puppy Bolt with his grandmother.



Bexley fundraising group raised **£1,600** through a collection at the Eltham Sainsbury's store and through a raffle of a toy puppy generously donated by Andrex.

The Taunton fundraising group celebrates its 60th anniversary this year and is approaching a fundraising total of **£1million**. They have a busy calendar of events throughout the year including a family fun day, as well as regular street collections.

The Leamington and Warwick fundraising group raised nearly **£2,700** at their Christmas fair. They were particularly delighted to receive a lot of positive feedback on social media from local parents about their Santa's grotto!



Puppy walker **Kate Washford** raised **£1,809** at car boot fairs in the months leading up to Christmas. The money came from a donation of pitch fees by the organisers and from collections at ten of the fairs.

Stalwart fundraiser **Lamont Forbes MBE** entertained customers at Tesco, Montrose, with his Christmas music keyboard playing, and raised **£1,487**.



Coventry Building Society's Arena branch has raised more than **£10,000** in less than three years, enabling them to name two guide dog puppies. The branch raised the money through quiz nights, cake sales, sponsored runs and tombolas.

Contemporary sculptor **Victoria Claire** held an exhibition of her own work, called 'Blind A Sixth Sense' in Herne Bay, which was based on her own experience of sight loss. The exhibition raised **£1,400** through sales of sculpture, CDs, hats and a raffle.

During last year's Guide Dogs Week, **John Turner** walked from the Guide Dogs office in Shrewsbury to Lichfield cathedral, a distance of 54 miles, and raised just over **£1,500**. Thank you to all his supporters.



The **Leeds fundraising group** had a stall at the historic Buttercross in Otley and, together with a street collection, raised **£937**. Among those lending their support were nine-year-old Joe Wilkinson, who like his grandfather and guide dog owner, Kevin Beesting (see photo), also has sight loss.

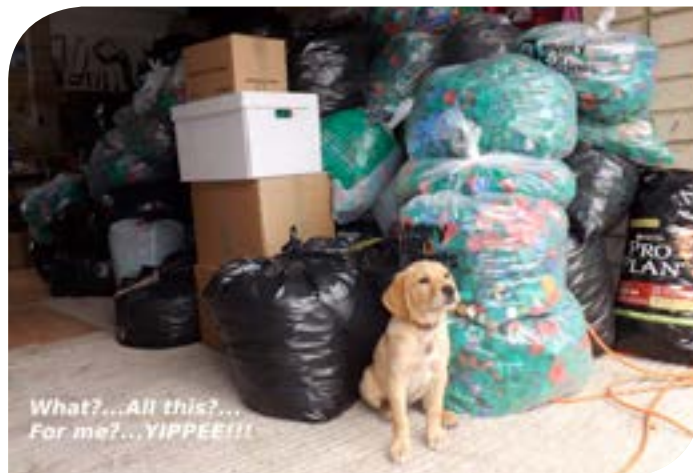


Jane Weightman and **Gemma Eley**, who both work at the Leamington Guide Dog Training School, cycled from London to Paris and raised **£3,344**.



Julie and Stuart Stephens have been tireless fundraisers for Guide Dogs and Julie is a guide dog owner herself. So far, they have raised more than **£35,000** through major events including a ball to celebrate their 30 years of marriage, as well as through collections when speaking to groups such as Girl Guides.

A collection at the **Stadium of Light, Sunderland**, raised **£717**. Many thanks to the volunteers who braved a bitterly cold day and to the generous Sunderland AFC supporters.



Beryl Hope has been collecting recyclable milk bottle lids since October 2012 – so far more than 15 tonnes of them, raising nearly **£1,000!**

The Great Guide Dogs Tea Party

Let's get your party started!

GUIDE DOGS



This summer, help us change lives by hosting a

Great Guide Dogs Tea Party!

All you need to do is order your free party pack today and have some fun fundraising.



Go to guidedogs.org.uk/teatime or call **0345 143 0192**



Get ready for **Guide Dogs Week 2018**

6-14 October

How will you Move it for Money in Guide Dogs Week 2018?

In 2017, thanks to you, Guide Dogs Week was a resounding success. With your help, we raised thousands of pounds to help continue our life-changing work. We're going to do it all over again in 2018 and once again need your support.

We know that many of you are passionate about our cause, so we're calling on every single Forward reader to do something they love for Guide Dogs Week.

So, what about you? What moves you? What do you love doing?

This is an opportunity for you to share your love of walking, baking, partying, socialising, or anything in the most fun and worthwhile way possible. Whether you choose to do something at home, at work, at school or in your community, Move it for Money this Guide Dogs Week.

To find out more and to register for your free fundraising pack visit guidedogs.org.uk/guidedogsweek

Did you know that by raising £35 during Guide Dogs Week you could help keep a life-changing guide dog partnership on the road for a week?



Everyone who orders a fundraising pack will get a free pair of dog ears to help them raise money for their favourite charity.

Canine obituaries



This is the last We'll Never Forget section to be included in Forward, and it's appearing only in this, the online version. If you'd like to publicly pay tribute to your dog, please contact our Supporter Care team via **0800 953 0113** or **guidedogs@guidedogs.org.uk** and they will help you get your dog featured in our free online Book of Remembrance, which you can view at **guidedogs.org.uk/neverforget**.

Aero 10.5.07 – 22.12.17

Puppy walked and rehomed by Pam King. A total charmer, loved and missed by so many. Never to be forgotten. Sleep well dear boy.

Alfie 4.5.06 – 15.9.17

Retired to Jill Hunter. Loved by Penny and Laurence and all who met him. Only 21 months together, we will love and miss you forever, Jill and Paddy.

Alfie 2.7.03 – 27.2.18

Retired early to Neil and Ann de Voil. Marvellous ambassador for Guide Dogs for over 11 years helping the Leicester group. Very much missed.

Angel 16.6.06 – 25.8.17

Taken from us so suddenly, our grief was indescribable. She was a gentle, serene, faithful lady, adored by all. Bless you Angel, you brought us such happiness.

Arthur 21.12.06 – 5.2.18

Puppy walked and retired to Brenda Weaver. Superb guide to Richard Stancombe. A true gentleman who will always be missed. Run free my big gentle giant.

Camargo 16.10.04 – 30.10.17

Came over from Madrid, a Latin lover, he sired many beautiful, headstrong puppies. Our darling, handsome boy. We miss you so much. X

Chloe 17.11.04 – 18.8.17

Guide to Tim Guttridge. Puppy walked and retired to Nicky Cockroft. The most mischievous guide dog but we loved her dearly. Missed so much.

Connie 4.2.02 – 27.1.18

Retired to Ann Moorhouse. Thank you little Con for all the wonderful times we shared and the fun we had. God bless.

Denki 12.7.06 – 6.10.17

Rehomed with the McLean family. A loving and dear companion, a wonderful blessing in our lives. Our beautiful boy will be forever missed.

Dolly 19.7.02 – 3.11.17

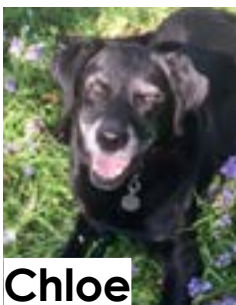
Friend and companion for 15 years. Didn't make it as a guide dog but helped us raise lots of money and spent eight years as a PAT dog.

Errol 13.6.09 – 22.6.17

Big black gentle giant with a huge personality, who loved to sing and be part of the family. Loving, loyal and missed by all.

Ewan 20.11.04 – 24.1.18

Faithful guide and much-loved companion to Angela Spokes, rehomed and cared for by Sheila in his retirement. Puppy walked by Christine Hughes.



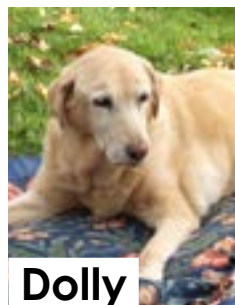
Chloe



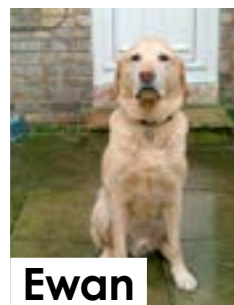
Connie



Denki



Dolly



Ewan



Fern



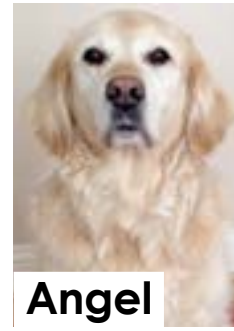
Aero



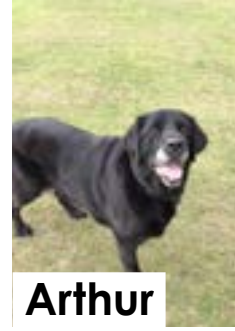
Alfie



Alfie



Angel



Arthur



Camargo

Fern 15.2.08 – 9.1.18

Princess Fern was the sweetest, kindest, most loyal guide dog, who helped me on a wonderful journey. Beautiful girl, we had a special bond.

Flora 15.6.09 – 18.5.17

Guide to David Walker, puppy walked by Lorraine Meehan, loved by all. Sleep sweet, my master I will wait. Sleep sweet in rainbow's light.

Foster (Fozz) 31.7.04 – 1.8.17

What a dog! He loved everyone and everything, this world is a lesser place without you puppy.

Gino 17.4.07 – 19.1.18

Born to guide Maxine and remained with her in retirement. A handsome lifesaver, who went beyond

the call of duty. Keep barking, digging and sniffing.

Glen 26.5.03 – 27.2.17

Third guide to Wendy Hulford. Puppy walked by Marissa Pauwels-Jeffrey. Such a loving, gentle and happy little man. Thanks for being our friend.

Hobbs 18.9.03 – 19.9.17

A gentle giant and wonderful guide to John. Faithful friend, full of mischief to the end. Missed by all who knew him.

Hudson 28.12.03 – 26.10.17

You had so much love to give, and touched the lives of all you met. Thank you for everything, you're missed dearly.

Indy 14.8.04 – 29.10.17

Faithful guide to Daphne Lapping,

retired to puppy walkers Margaret and Clive Bushell. Our beautiful girl is sadly missed. Rest in peace with Mason.

Ivy 22.4.05 – 24.4.17

Our special, most beautiful Ivy Bear. Overwhelmingly and constantly loving and giving. Words can't express how heartbroken we are. Enjoyed to the full and missed immensely.

Jasper 16.10.07 – 16.2.18

Fun loving, very loyal with a mischievous streak. Loved and missed by all. Puppy walker Shirley, guide to Nicky and retired to Angela and Clive.

Kathy 17.01.04 – 09.02.18

Adored, both as a guide dog and in retirement. Gentle,

wise and loving, rest sweetly our gorgeous girl, you will be forever missed.

Keiran 23.2.06 – 4.4.17

Very loyal guide dog and best pal to Andrew Frankland. We'll never forget you. Love and miss you forever.

Kerrie 8.1.06 – 1.7.17

Confident, enthusiastic second guide to Toby Davey. Puppy walked by Fran and Mike and retired to Sara's parents. Loved and missed by all who knew her.

Klint 21.2.08 – 20.11.17

Puppy walked and retired to Lindsey, Verena and Stephen Walder. He brought us so much loved and joy. Sadly missed, forever loved.



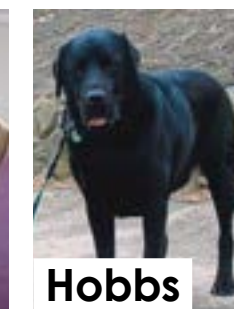
Foster



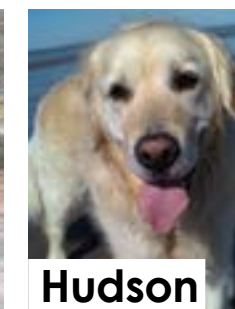
Gino



Glen



Hobbs



Hudson

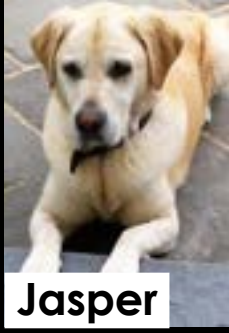


Indy

Canine obituaries



Ivy



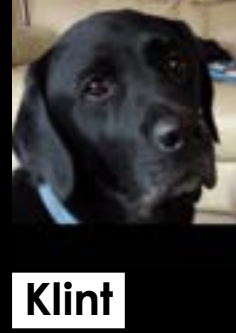
Jasper



Keiran



Kerrie



Klint



Lillie

Lillie 7.4.06 – 24.1.18

Puppy walked by the Prosser family, returned to us when withdrawn from training. Our beautiful, big-hearted girl, who was loved by all. Greatly missed.

Magic 20.8.06 – 21.8.17

Blue Peter puppy, withdrawn due to epilepsy, rehomed with Val and Clive Brazier. Sweet natured, gentle and much loved. Sorely missed by guide dog companion Brooke.

Magnus 1.3.02 – 8.1.18

Our beautiful, smiling boy, everyone loved your gentleness. Best friend and guide to Kate, retired to Steve and Hildred. You enhanced our lives. Never forgotten.

Marshal 30.3.06 – 17.3.17

Faithful guide and companion to Drew, truly missed by all who knew him. Rest in peace.

Meg 22.6.03 – 22.1.18

Loyal and beloved companion to Valerie Hicks and, in retirement, provided empathy and joy to many. I will miss you, Rosalind Hume.

Milo 18.07.06 – 16.03.18

Guide dog to Margaret Lind, puppy walked by Margaret Jones and retired to Mr and Mrs Wilson. Will be sadly missed.

Morris 7.1.04 – 19.1.18

Puppy walked by Mr and Mrs White. Loved by all, my guide and friend, who loved being outdoors. How we shall miss you,

beloved Morris!

Nushka 05.03.07 – 03.01.18

Guide to Tina Snow. Put to sleep after a short illness. Sadly no retirement. Run free on Appley beach my Russian princess.

Opal 13.4.04 – 13.3.17

Puppy walked and returned to the Abbott family. Everyone who knew her loved her – our beautiful 'Opetta'.

Orla 18.4.08 – 24.11.17

Guide dog to the late Michael George Lacey. Happily retired but gone too soon. Much loved and greatly missed.

Petra 2.12.07 – 5.12.17

In loving memory of Petra. Rehomed to the Thompsons in 2015. Adored by everyone, especially the Kuhns. RIP

our best friend.

Quentin 4.1.04 – 30.6.17

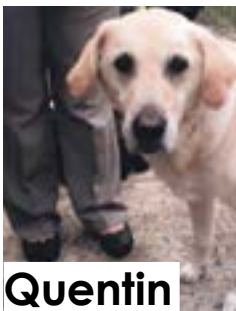
Puppy walked by the Coyle family. A much-loved friend who brought joy to all who knew him. Will miss our beautiful boy so much.

Quentin 6.9.04 – 12.8.17

A prince of guide dogs, loveable companion, loved by everyone. Thank you for being my eyes for 11 years. Missing you so much.

Rascal 19.6.04 – 13.1.17

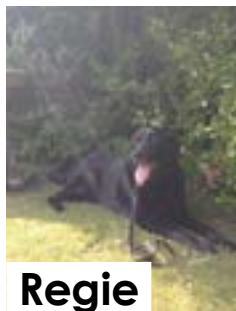
Puppy walked by Chrissie Breakwell, first guide and companion to Kenneth Fear and retired to him. Huge character, made a big difference. Sleep well fella!



Quentin



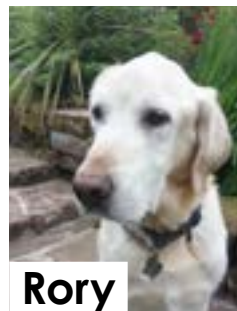
Rascal



Regie



Ritzie



Rory



Rupert



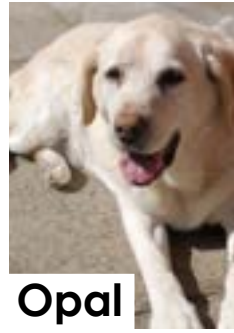
Magic



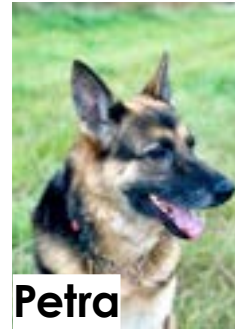
Marshal



Meg



Opal



Petra



Quentin

Regie 24.11.03 – 31.5.17

Big fluffy bear, faithful friend and companion. Great guide to John, fly high beautiful. Sadly missed by all.

Ritzie (Misty) 8.1.05 – 27.1.18

Guide and hearing dog for Linda. Retired to the Wood family. A wonderful friend, you will be in our hearts forever. Love you always Snim. X

Rory 4.8.08 – 9.3.18

Loving and faithful guide dog and pal to Gordon Waddell. Puppy walked by Fiona and Anthony Lole and best friend to Irene.

Rosa 8.10.08 – 15.11.17

Second guide dog to Hillary Jones. Much missed already, will never be forgotten. Always in our

thoughts. You were one in a million.

Rupert 15.8.08 – 8.9.17

Guide to Bill Clark, a fantastic dog loved by everyone he met. Often resembled a hippo in mud during free runs! Run free Rupert Bear.

Sally 11.2.03 – 5.9.17

My first guide dog. Very beautiful, funny, gentle, loyal and pleasant. Adored by everyone. Once picked up a whole baguette and carried on working! Missed forever.

Secco 06.08.07 – 08.11.17

Incredibly cheeky character who was forever optimistic. The White family will miss him terribly and are heartbroken not to have him snoozing at their feet.

Sky 17.3.08 – 13.11.17

Guide to Brenda Williams. Spent her last 21 months with Lorraine and Trevor. Brought joy and happiness to both families and was much loved.

Suzie 2.9.06 – 5.3.18

Guide to Mr Mark Evans, retired to puppy walkers by the seaside. Wonderful gentle natured friend, who loved her 'cwtches'! Sleep well our lovely girl.

Tim 1.11.10 – 5.12.17

Forever in our broken hearts, miss you. Love mum and dad.

Timber 5.11.01 – 28.11.17

You were a hard-working loyal friend, gone to heaven. We all miss you. From all your friends, Peter and Pat, God bless.

Umber 20.2.09 – 5.9.16

Big softie with a giant personality. Guide and companion to Maria McPhail, retired to Daphne and Russell Lee. A hard act to follow.

Ushi 9.6.06 – 9.10.17

Number one guide dog, number one diva! We will all miss you – now happily chasing Reuben forever.

Wilt 31.7.09 – 30.10.17

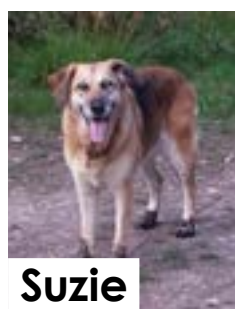
Faithful guide and companion to Jim Doyle. Greatly missed by all the family and will always be remembered affectionately. Rest in peace.



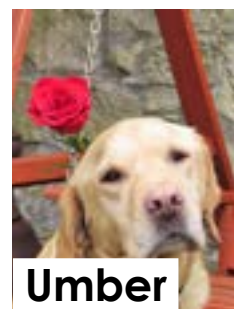
Secco



Sky



Suzie



Umber



Worthy

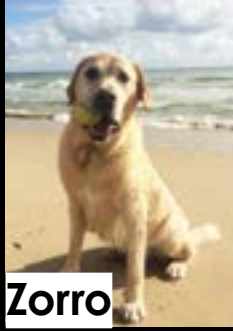
Canine obituaries



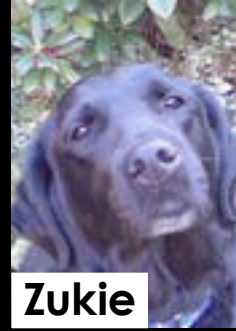
Zena



Zim



Zorro



Zukie

Worthy 22.4.02 – 7.4.17

Second guide to Barbara Stevens. Precious memories of your love and devotion and our lovely walks. Now at peace together with George.

Zena 29.6.02 – 20.9.17

Our beautiful, gentle girl. Loved by all who met her. Retired to Lisa and

James. Forever in our hearts – run free Angel. Xx

Zim 29.6.02 – 31.8.17

Mr Zim, lost my best mate, loved and missed by so many. My first guide dog, love you to bits, miss you always my friend.

Zorro 18.3.06 – 26.10.17

Puppy walked and retired to the Muggleton family

after guiding Richard Dye for eight years. Your cuddly toy greetings will be missed by all who knew you.

Zukie 13.12.00 – 17.11.17

Puppy walked and returned to Katrina Sheldrake when the job wasn't right for Zukie Lou-Lou. Always a joy but the time came to forever run free.

In memory

Kathleen Wilkinson



It is with great sadness that we announce the death of Kathleen Wilkinson. Kath was a guide dog owner from 1988 until a few years ago, and in that time, along with her late husband Trevor,

formed one of the earliest fundraising branches in the Leeds area. Together they volunteered tirelessly for Guide Dogs and made many friends who also went on to become Guide Dogs supporters. More recently, Kath used Guide Dogs' My Guide service and remained a passionate supporter. Kath was well-known by staff and fellow volunteers alike and is greatly missed.

Doris Lloyd



It is with deep sadness the Norwich branch announces the death of Mrs Doris Lloyd on 15 January 2018, aged 97. Doris, and her late husband Tony, were founder members of the Norwich branch

and tireless volunteers, contributing to the £1.3m raised by the group over its 38 years. Doris served on the committee as secretary from its inaugural meeting on 7 November, 1979 until 7 April, 1999, then as treasurer from April 2003 to November 2007 and remained as a member of the committee until her death, still collecting at store collections and counting money on flag days in 2016.

Congratulations

to our new partnerships

New partnerships are listed by mobility team. Each listing details owner, guide dog, town, breed, puppy walker, brood bitch holder and boarder. Warm congratulations to all our new qualifiers.

Belfast

Raymond Barbour & Ben from Donaghadee
GR Mike & Catriona Adams from By Dalkeith
* Tammi Curran from Rugby. Mrs Ann Freeman from Banbury

Charlotte Bennie & Christie from Newton
Stewart LxGR Andrea Clark from Kinross * Lisa Partridge-Davis from Cleeve Prior. Janet O'Grady from Belfast

Rebecca Cullen & Buffin from Belfast GR Peter McFarland from Ballyclare

Julie Graham & Pete from Ballymena GR Lesley Newberry from Bangor

Alexander Keenan & Dileas from Belfast LxGR John & Lesley Gunning from Lanark * Peter Turton from Coventry

Kim Liggett & Quinn from Belfast L * Jackie Evans from Droitwich. Mrs Pamela Griffiths from Coventry

Rebekkah Lindores & Iggy from Belfast L Maria Thorburn from Glasgow * Mrs Carol Clarke from Rushden

Carol Mann & Buff from Larne GRxL Alison & Eric Lovie from Aberdeen * Mr & Mrs Pete Williams from Droitwich. Mr &

Mrs Richard & Karen Hambleton from Carrickfergus

Arlene Miller & Bailey from Limavady L Craig & Evelyn Henderson from Kelty * David Windhaber from Northampton. Mrs Lana Taylor from Stratford-Upon-Avon. Miss Pauline Jenkins from Belfast

Elizabeth Royle & Alhambra (Allie) from Belfast GR Robert Donald from Perth

Deborah Shaw & Frizz from Antrim GRxL Brian & Florence Robinson from Kilwinning * Layla Champion from Solihull. Mr & Mrs Tony & Patricia Revell from Solihull. Michael & Jill Armer from Downpatrick

Joanna Toner & Kitty from Lisburn GRxL Margaret Leaver from Perth * Mr & Mrs Pete Williams from Droitwich. Steve & Ruth McEwan-Lyon from Holywood

Birmingham

Sundee Bains & Bluey from Birmingham GRxL James & Ann Simonds from Stourbridge * Adrian Newitt from Leamington Spa. Mr & Mrs Pete Williams from Droitwich

Edward Buckley & Rolo from Scunthorpe GSD Fiona Parkinson from

Kidderminster * Trudy Evans from Coventry. Mrs Wendy Adams from Daventry

Ellie Bush & Bryony from Welton GR Ruth Oliver from Worcester * Stephanie Hill from Warwick. Ms Roma Amabile from Birmingham

Della Campbell & Ufton from Ledbury GRxL Susan McCulloch-Marshall from Shipston-on-Stour * Sally Weston from Birmingham. Miss Karin Huntley from Coventry. Mr Alistair Fountain from Leamington Spa

Jaqueline Clark & Katy from Birmingham GRxL * Jessica Macgregor from Warmington. Mrs Anne Watson from Kenilworth

Chloe Cotterrell & Ben from Hereford L Karen Tully from Plymouth * Jackie Ellison from Coventry

Jim Doyle & Verdis from Broadway L Judith Lowe from Stourbridge * Sandra Hoffman from Coventry. Miss Jacqui Roe from Kenilworth

Daniel English & Topsy from Hereford GRxL Barr & Ann Breckenridge from Solihull * Dianne Merker from Malvern

Clare Finnimore & Sparkle from Cirencester LxGR Chris & Jane Warden &

Poole from Ilminster * Colin Ballinger from Daventry. Mrs Pauline Belton from Didcot. Elizabeth Stone from Leamington Spa

Zoe Garratt & Jenson from Birmingham LxGR * Suzanne Adey from Derby

Nigel Godwin & Snoopy from Bromsgrove L Jayne Morris from Sutton Coldfield * Marie Denscombe from Chipping Campden. Mr Paul Sharp from Coventry. Jamie Kirk from Brinklow

Charlie Halsall & Jake from Exeter GRxL * Lucy Anne Chandler from Gloucester. Mr Paul Albrecht from Stratford-Upon-Avon. Mrs Lisa McCrickard from Leamington Spa

Chris Hill & Legend from Pershore GRxL John & Maggie Garland from Clevedon * Cindy McCreary from Kidlington. Janette & Mark Dudley from Leamington Spa

Lynsey Howell & Snowdon from Swindon LxGR Joyce Nall from Chippenham * Claire Webster from Sutton Coldfield

New partnerships

Milwyn Jones & Russ from Hereford L Kathryn Woodcock from Southam * Jackie Elliott from Warwick. Mrs Lana Taylor from Stratford-Upon-Avon.

Nicholas Parkin & Glen from Chippenham LxGR Gill Maynard from Southampton * Helen Cookes from Nuneaton. Mr Marcus Faulkner from Warwick.

Marjorie Pope & Nutmeg from Droitwich LxGR Tim & Emily Ford & Williams from Cheltenham * Claire Webster from Sutton Coldfield.

James Preston & Nelson from Birmingham LxGR Richard & Margaret Lee from Tewkesbury * Mrs Pauline Belton from Didcot

Christine Rabbage & Ulani from Erdington LxGR * Leslie Johnson from Redditch. Mrs Pauline Belton from Didcot. Mrs Janet Welsh from Warwick

Simon Rabbage & Marlow from Erdington GRxL * Edwina Griffin from Worcester. Miss Karin Huntley from Coventry.

Amie Slavin & Hudson from Lincoln GSD Carol Harris from Kingsbridge

Matthew Spellar & Milo from Hereford GRxL * Karen Stanton from Southam. Mrs Catherine Egan from Lower Broadheath.

Gary Stevenson & Doug from Derby L * Colin Sargent from Coventry. Mr Alistair Fountain from Leamington Spa.

Marie Taylor & Polly from Evesham LxGR Richard & Sandra Nash from Malvern * Joan Raxter from Redditch. Mr Kevin Taylor from Warwick

Vivienne Timbrell & Yola from Cheltenham GR Richard & Sandra Nash from Malvern * Ian Hendry from Birmingham. Mrs Catherine Egan from Lower Broadheath.

Lorren Wilde & Casper from Hereford L Paula Price-Sampson from Basildon * Miss Amanda Hancocks from Daventry

Cardiff

Stephen Mark Bagby & Harper from Mold GRxGR Derek & Ingrid Shottin & Arntzen from Chepstow * Sue Wilkins from Rugby. Mrs Jane Swain from Hinckley

Sharon Bright & Scout from Cardiff L, Richard & Deborah Wilkinson from Aberdeen * Marie Lee-Hopps from Redditch. Miss Amanda Hancocks from Daventry. Mrs Joanna Reed from Leamington Spa

David Chaffey & Kaypea from Ebbw Vale L Patrick Hartery from Barry * Jilly Walker from Leamington Spa. Miss Sarah Sheasby from Bromsgrove

Suzanne Curthoys & Honey from Newport L * Sue Walters from Stourbridge. Bev Luchmun from Cardiff

John Dabbs & Tommy from Tenby LxGR Susan Thomas from Weston-Super-Mare * Stephanie Hill from Warwick. Peter & Clare Topping from Kenilworth

Gareth Davies & Perry from Cardiff L Lee Blanning from Pontypool * Stephen Miller from Chipping Norton.

Brian Dulson & Timber from Wrexham LxGR * Paul Dodd from Ross-on-Wye. Mrs Pamela Griffiths from Coventry

Sue Dyer & Sid from Barry GRxL John & Sandra Gibbs from Port Talbot * Amanda

Bourne from Nuneaton. Mr Paul Albrecht from Stratford-Upon-Avon

John Ellis & Jim from Caernarfon GR Anne Skinner from Wells * Gillian Seager from Chipping Campden. Mr & Mrs Pete Williams from Droitwich

Amanda Francis & Barley from Cardigan GRxL Alleyne & Christine Barlow from Plymouth * Helen Benson from Redditch. Mrs Anne Watson from Kenilworth. Miss Elizabeth Bullimore from Pontypool

Derrick Goodwin & Cooper from Blackwood L Gill Maynard from Southampton * Jackie Elliott from Warwick. Mrs Lana Taylor from Stratford-Upon-Avon

Keith Greenhaf & Alex from Newport LxGR Elaine Osinski from Bathgate, Ian & Joyce Wallace from Glenrothes * Helen Elbourne from Stratford-Upon-Avon. Rev Craig Grocock from Leamington Spa

Bryan Hallows & Mabel from Pontypool GRxGSD Catriona & Neil Macaulay from Dumbarton * Amanda Turner from Shrewsbury. Mrs Catherine Egan from Lower Broadheath. Mr & Mrs Neil & Elaine Parke from Cardiff

Tina Harrison & Evie from Cheshire GRxL * Douglas Watt from Leamington Spa. Mr L Boylan from Coventry. Mr Duncan McDonald from Warwick

Angela Heywood & Spirit from Amlwch L * Janet Paget from Rugby. Miss Amanda Hancocks from Daventry. Mr Andrew Becconsall from Leamington Spa, Mr & Mrs Richard & Mair Scamans from Llandudno

Anthony Hoofe & Leah from Montgomery STPxL Andrew & Debra Coleman from Gloucester * Joan

Brinkworth from Nuneaton. Mr & Mrs Landsberg from Milton Keynes

Kerry James & Harriet from Bridgend GRxL Jane Kempton from Harbury * Linda Atkins from Stratford-Upon-Avon. Mrs Joanna Reed from Leamington Spa

Andrew Jinks & Becky from Blackwood GRxL John & Margaret Ure from Carnoustie * Susan Golding from Evesham. Mr L Boylan from Coventry. Miss Jacqui Roe from Kenilworth

Hazel Jones & Woody from Machynlleth GRxL Margaret Hamilton from Glasgow * Jenny Cooksley from Coventry. Mr Barry Holtom from Wellesbourne

Eric Lorenz & Darcy from Llandudno LxGR * Suzanne Adey from Derby

Patricia Moore & Sparkle from Cardiff GRxL * Janet Holt from Hinckley. Mrs Chrissie Abrahams from Cardiff

Anne Morris & Coffee from Rhyll LxGR * Peter Minty from Cheltenham. Mrs Carol Manley from Cardiff

Adrian Neat & Tess from Cwmbran L David Rees from Swansea * Christina Sibbald from Wantage. Mrs Kerry Greaves from Leicester. Lucy Frampton from Cheddar

Faith O'Sullivan & Buddy from Bridgend L * Gail Winnett from Birmingham. Andrea Cooper from Cardiff

Yvonne Ashford Pearce & Brandon from Mold STPxL Jennifer Parker from Warwick * Joan Brinkworth from Nuneaton. Mr & Mrs Landsberg from Milton Keynes. Madeline Bridget Wells from Leamington Spa, Samantha Curtiss from Colwyn Bay

Robert Pritchard & Pricey from Swansea L Roger

& Lindsay Williams from Brixham * Mrs Nicola Scarrott from Witney

Iain Runcie & Summer from Abergele GR * Sharon Cranston from Daventry. Samantha Curtiss from Colwyn Bay

Colin Vaughan & Amber from Newport GRxGSD Ben & Yve Strawson from Cwmbran * Mrs Catherine Egan from Lower Broadheath. Mrs Elizabeth Davies from Pontyclun

Connor Vaughan & Raymond from Caldicot L Sue Spicer from Chichester * Douglas Watt from Leamington Spa. Miss Sarah Sheasby from Bromsgrove. Mrs Catrin Lewis from Cyncoed

Coventry

Margaret Arnold & Ushka from Leicester LxL Sheila & David McKeown from Glenrothes * Claire Aluko from Northampton. Mr Kevin Taylor from Warwick. Mr & Miss Tom & Amy Griffith/Levis from Wolston

Kara Ayres & Marina from Northampton LxGR * Joan Raxter from Redditch. Mr Kevin Taylor from Warwick

Gillian Batterham & Holly from Northampton LxGR * Elaine Aworth from Towcester. Mrs Sharon Broer from Coventry. Mr & Mrs Claire & Ian Cobbold from Leamington Spa

Robynn Bellemore & Toby from Nottingham GRxGSD Cicely Smith from Bristol * Miss Karin Huntley from Coventry

Frank Berry & Sissy from Northampton GRxL Sarah Holt from Leicester * Janet Holt from Hinckley. Mr & Mrs John & Sian Gulliver from Leamington Spa

Denise Birch & Delphi from Solihull LxGR * Suzanne Adey from Derby. Richard & Anne Murray from Hatton

Paul Bowen-Carter & Aramis from Kingswinford GSD

Dawn Brown & Hattie from Stratford-Upon-Avon GRxL Dorothy Judith Anne Barrett from Rugby * Janette Baines from Burton-on-Trent. Ms Christine Jackson from Warwick

David Greenwood & Lincoln from Belper L John & Pamela Hatchek from Yelverton * Catherine Keenan from Halesowen. Mr & Mrs Laura & Dan Cale from Warwick

Walter Hardy & Elvis from Wellingborough L Barbara Bluff from Hinckley * Linda Sheehan from Evesham. Rev Craig Grocock from Leamington Spa

Lilian Holloway & Cookie from Rushden LxGR Elaine Clare from Leicester * Colin Ballinger from Daventry. Mrs Pauline Belton from Didcot. Mr & Mrs Keith & Kelly Merritt from Leamington Spa

Sonia Kelly & Harty from Nuneaton GRxGR Steve Ball from Coventry * John Rogers from Bromsgrove. Mr & Mrs Sue & Anthony Moore from Leamington Spa

Susanne Killeen & Tiger from Coventry LxL Fionne Jones from Milton Keynes * Sue Lancaster from Bedford. Mr Jonathan Packer from Leamington Spa

Christopher Malpas & Sergeant from Northampton L * Marie Denscombe from Chipping Campden. Mr Paul Sharp from Coventry. Mr & Miss William & Rachel Thomas/Gardner from Leamington

Denise McCormick & Paris from Sutton Coldfield GRxL Rebecca Mackintosh from Rugby * Diane Merker from Malvern. Mr & Mrs Andy & Sue Bowden from Kenilworth

Beverley Muldoon & Chester from Leamington Spa LxGR Michael Donnelly from Coventry * Paul Dodd from Ross-on-Wye. Mrs Pamela Griffiths from Coventry

Rachel Nafzger & Sasha from Daventry GRxL Maria Mayhew from Stratford-Upon-Avon * Helen Benson from Redditch. Mrs Anne Watson from Kenilworth

Stephen Oates & Mowgli from Leicester GRxL Susan McCulloch-Marshall from Shipston-on-Stour * Susan Hollis from Worcester. Mrs Jane Swain from Hinckley. Miss Lottie Boyce from Leamington Spa

Martin Pawlik & Lincoln from Leamington Spa GRxL Paul & Maria Fellows from Sutton Coldfield * Cindy McCreary from Kidlington. Mr & Mrs Pearl & Roy Woodward from Kenilworth

Anthony Price & Wentworth from Leicester L Charlie & Pat Hill from Leicester * Mrs Ruth Ditch from Leamington Spa

Melanie Pritchard & Vector from Coventry CCRxL David & Gail Saunders from Oxford * Sarah Darnes from Stratford-Upon-Avon. Mr Adam Fincham from Leamington Spa. Mr & Mrs John & Sian Gulliver from Leamington Spa

Karen Rooke & Hetty from Nuneaton LxGR Margaret Tasker from Rugby * Margaret Seales from Malvern. Mrs Kim Roberts from Stratford-Upon-Avon. Mrs Sigrun Herlihy from Leamington Spa

Eric Selby & Yago from Coventry GSD David & Janice Nash from Bristol * Jacqueline Webb from Wolverhampton. Mrs Wendy Adams from Daventry. Mrs Sigrun Herlihy from Leamington Spa. Mr & Mrs Pearl & Roy Woodward from Kenilworth

Christine Sleath & Nala from Leicester L * Linda Sheehan from Evesham. Rev Craig Grocock from Leamington Spa. Ms Christine Jackson from Warwick

Amy Smith & Emily from Loughborough GRxL Pat Wilkinson from Rugby * Edwina Griffin from Worcester. Miss Karin Huntley from Coventry

Harriet Smith & Sparky from Daventry GRxL Shiela & Peter Halley from St Andrews * Lynn Dignan from Rugby. Mrs Ann Freeman from Banbury. Mr & Mrs Andrew & Jo Potts from Leamington Spa

Rakhee Solanki & Rio from Leicester L Ann Cooper from Swadlincote * M Whatman from Banbury. Rev Craig Grocock from Leamington Spa

Anne Stockdale & Hamlet from Leicester L Carol Edwards from Bedworth * Douglas Watt from Leamington Spa. Miss Sarah Sheasby from Bromsgrove. Mr & Mrs Nicola & Gary Small from Leamington Spa

Rodney Stone & Camden from Northampton LxGR Sheila Newport from Lichfield * Isard from Coventry. Mrs Elizabeth Millard from Coventry. Mr & Miss Dave Allcott & Karolina Staniak from Leamington Spa

Jacqueline Tootill & Brandy from Rushden GRxL Nigel & Sue Padget from Kettering * David Meadows from Gloucester. Mr & Mrs Pete Williams from Droitwich. Ms Hannah Tranter from Ashorne

Clare Williams & Quita from Smethwick GRxL Alison Timms from Birmingham * Day from Droitwich. Mrs Caroline Cheshire from Warwick

New partnerships

Mark Woolford & Artie from Towcester LxGR
* Helen Elbourne from Stratford-Upon-Avon. Rev Craig Grocock from Leamington Spa. Mrs Sue Burton from Warwick

Edinburgh

Robert Armstrong & Monty from Perth GRxGSD
Orlene McMillen from Bangor * Helen Sergison from Dudley. Mrs Anne Watson from Kenilworth

Irene Barclay & Barley from Grangemouth GR
Kay Macdonald from Edinburgh, Carol McWatt from Port Seton * Sheila Northover from Derby

Brian Bell & Laddy from Perth LxGR * Alison Nuttall from Redditch. Miss Sarah Sheasby from Bromsgrove

Jacqueline Grace Brown & Annie from Dunbar LxL * Susan Davis from Stourbridge. Mr Malcolm Sparrow from Rugby. Mrs Emma Cook from Edinburgh

Paul Byres & Anne from Aberdeen LxGR Derek & Nicola Ireland from Blairgowrie * Straker from Stratford-Upon-Avon. Denise Colvin from Kirriemuir

Dorothy Cunningham & Jack from Edinburgh GRxL Neil & Carol Wood from Dundee * D Ward from Rugby. Miss Anna Orzol from Edinburgh

David Cuthbert & Tag from Edinburgh LxGR Diane Macleod from Dunfermline * Peter Turton from Coventry. Rachel Ewan from Rosyth

Joan Dall & Daz from Berwick-Upon-Tweed L Denise Cameron from Dunfermline * Janet Chandler-Smith from Coventry. Mr Kevin Taylor from Warwick. Mrs Suzanne Steele from Brechin

Peter Davey & Milo from Cockburnspath GRxL
Pauline Duff from Glasgow * D Ward from Rugby. Iain Logan from Edinburgh

Leigh Alex Davis & Flynn from Edinburgh GRxGSD
Hugh & Jane Begg from Dundee * Sharon Faulkner from Coventry. Mr Paul Albrecht from Stratford-Upon-Avon

Carolyn Elliott & Pixie from Helensburgh GRxL Hazel Anderson from Stirling * Ian Hendry from Birmingham. Mr Paul Albrecht from Stratford-Upon-Avon. Iain Logan from Edinburgh

Alison Fraser & Krista from Leven LxGR * Tracy Twomey from Leamington Spa. Mrs Pauline Belton from Didcot. Ms Jan Binanti from Edinburgh

Sheila Hands & Gwen from Dundee GRxL Malcolm & Imke Thomson from Dundee * Steve Parsons from Cirencester. Mr & Mrs Pete Williams from Droitwich

Helen Harle & Lex from Banchory GRxGSD
Daniel Rooney from St Andrews * Joe Bourne from Nuneaton. Mr Paul Albrecht from Stratford-Upon-Avon. Denise Colvin from Kirriemuir

Ian Johnston & Morris from Edinburgh GRxL * Rachel Bagley from Coventry. Mrs Anne Cameron Batty from Edinburgh, Miss Pauline McAinsh from Edinburgh

Elsbeth Kyle & Lola from Glasgow L William & Sylvia Thomson from Bridge Of Don * Sandra Boden from Rugeley. Mrs Ruth Weatherall from Coventry. Mrs Anne Cameron Batty from Edinburgh

Fiona Kyle & Gus from Elgin GRxL Henry & Grace Simpson from Dundee * Steve Parsons from Cirencester. Mr & Mrs Pete Williams from Droitwich

Margaret Linn & Gilky from Falkirk GR Shelagh Davidson from Aberdeen * Christine Fowler from Southam. Kay Smith from Brechin

Cameron Mackay & Autumn from Edinburgh LxGR Phillippa Van Der Linde from North Berwick * Helen Elbourne from Stratford-Upon-Avon. Rev Craig Grocock from Leamington Spa

Alexander Miller & Hamish from Broxburn GRxL * Susan Warner from Gloucester. Mr Barry Holtom from Wellesbourne

Christine Morris & Annie from Edinburgh LxGR
Irene Dreghorn from Glasgow * Margaret Elaine Roberts from Stratford-Upon-Avon. Ms Gemma Smith from Forfar

Eilidh Kathryn Morrison & Joel from Aberdeen GRxL Fiona Davidson from Dundee * Amber O'Brien from Warwick

Joe O'Brien & Frankie from Anstruther LxGR
Heather Gilmore from Belfast * Stephen Lines from Leamington Spa. Mr Marcus Faulkner from Warwick. Ms Fiona Retalic from Forfar

Sorcha Pringle & Suzie from Dundee GR Joyce Higginson from Lisburn, Jacqui Gormley from Ballyclare * Tammi Curran from Rugby. Mrs Ann Freeman from Banbury

David Rafferty & Morris from Falkirk GRxL Kay Connar from Falkirk * Jackie Ellison from Coventry. Mr Keith Binding from Banbury. Mrs Gillian Davidson from Forfar

Ciaran Reid & Cameron from Arbroath GR
Margaret Morrison from North Berwick * Tammi Curran from Rugby. Mrs Ann Freeman from Banbury

Janette Scott & Esme from Stirling GRxGSD James & Alice Tosh from Aberdeen * Sharon Faulkner from Coventry. Mr Paul Albrecht from Stratford-Upon-Avon

Craig Stephen & Gilbert from Aberdeen GRxGR * Amanda Adkins from Buckingham

Lee Stewart & Yoko from Dunfermline GRxL
Pauline Martin from Perth, Jimmy & Anne Kelly from Alloa * Jill Overton from Birmingham. Michael Smith from Forfar, Ms Emma Taylor from Edinburgh

Iain Strachan & Quip from Newport-on-Tay L Brian & Wendy Cunningham from Dundee * Jackie Evans from Droitwich. Mrs Pamela Griffiths from Coventry. Colin Murray from Forfar

Donna Taylor & Robbie from Alloa LxGR Alexander & Jackie Weir from Lauder, Shiela & Peter Halley from St Andrews * Jacquie Williams from Moreton-in-Marsh. Mrs Sharon Broer from Coventry. Miss Gill Stott from Edinburgh

Dianne Theakstone & Merlin from Stirling L, Alastair & Isobel Robson from Dunfermline * Valerie Veness from Sutton Coldfield. Mrs Liz Gould from Evesham. Mrs Susan Scott from Forfar

Mhairi Jane Thurston & Meadow from Dundee GRxGSD Mairi & Peter Hughes from Perth * Amanda Turner from Shrewsbury. Mrs Catherine Egan from Lower Broadheath

Exeter

Sylvia Arney & Onyx from Taunton LxGR Tim & Lesley Jeynes & Robson from Pershore * Lorna Latham from Evesham. Mr Philip Jordan from Bristol

Jason Aughton & Murphy from Exeter GRxGSD
Andrea Eaton from Clevedon * Amanda Turner from Shrewsbury.
Mrs Catherine Egan from Lower Broadheath

Alistair Blackmore & Robyn from Ilminster LxGR
Daniel McKeeman from Dunfermline * Elaine Aworth from Towcester.
Mrs Sharon Broer from Coventry. Susan Ainsworth from Kenilworth

Andrew Bouchier & Wheeler from Exeter
L Elaine Francis from Rhondda Cynon Taff * Marie Lee-Hopps from Redditch. Miss Amanda Hancocks from Daventry

Fran Branfield & Fenton from St Agnes GRxGSD
Richard & Marion Farmer from Exeter * Miss Karin Huntley from Coventry. Mr Ian Phillips from Wellesbourne

Catherine Brown & Ruby from Glastonbury GRxGR
Lorraine Beechener from Exeter * John Rogers from Bromsgrove. Mr & Mrs Paul & Geraldine Tomlinson from Ottery St Mary

Philip Brown & Gus from Mid Glamorgan L Hillary George from Blandford Forum * Catherine Keenan from Halesowen

Danielle Burgess & Bailey from Ventnor GR Maggie McElhill from Moreton In Marsh * Gillian Seager from Chipping Campden. Mr & Mrs Pete Williams from Droitwich, Mr Ian Phillips from Wellesbourne

Maggi Burgess & Kip from Weston-Super-Mare GR Patricia Butcher from Wisbech * Gillian Seager from Chipping Campden. Mr & Mrs Pete Williams from Droitwich. Mrs Natasha Borgeat from Bristol

Christine Cheal & Motti from Plymouth L Anthony & Joanna Wareham

from Clevedon * M Whatman from Banbury.
Rev Craig Grocock from Leamington Spa

Susan Cooke & Hedley from Bristol GRxL Henry & Maggie McNulty from South Petherton * Janette Baines from Burton-on-Trent. Mr Jason Chubb from Leamington Spa, Mrs Claire Thomas from Bristol

Alun Davies & Kirk from Bristol GRxL Carolyn Sloan from Prestwick, Raymond & Susan Carruth from Prestwick * Amanda Hilton from Shipston-on-Stour. Mrs Joanne Careless from Leamington Spa

Wayne Dawkins & Tobi from Buckfastleigh GRxGSD Lynda Moore from Plymouth * Mrs Catherine Egan from Lower Broadheath

Deborah Fallick & Barclay from Plymouth LxGR Janet Hannah from Cardiff * Stephanie Hill from Warwick. David & Sally Hart from Fenny Compton

Meriel Feather & Queisha from Budleigh Salterton GRxGR * John Rogers from Bromsgrove. Miss Faye Winter from Teignmouth

Brian Gardiner & Austin from Bristol GRxL Valerie Jordan from Kidlington

Peter Gear & Yvonne from Trowbridge GSD * Gloria Jayne Walton from Birmingham. Mr & Mrs Sh Cox from Axminster

Barrie Goodfellow & William from Exeter GRxL Keith & Isabella Woolley from Corby * Amanda Hilton from Shipston-on-Stour

Glen Charles Graham & Rab from Cullompton L Rachael Cumming from Brechin * Mrs Ruth Weatherall from Coventry

Liam Harkness & Mossie from Frome GRxGSD
Chris McCreery from Southampton * Amanda

Turner from Shrewsbury.
Mrs Catherine Egan from Lower Broadheath

Timothy Hill & Joe from Cardiff GRxGSD Judith Morgan from Pontypool * Mrs Catherine Egan from Lower Broadheath. Mrs Heather Spackman from Exeter

Ceri Hudson & Lucy from Taunton GRxL David Beddow from Wotton-Under-Edge * Dianne Merker from Malvern. Mrs Sara Bennett from Exeter

Tirion Hughes & Darby from Ivybridge LxGR Solveig Godauski from Southampton * Suzanne Adey from Derby

Louise Jenkins & Alpha from Teignmouth L Barbara Bachtold from Bristol * Marie Lee-Hopps from Redditch. Miss Amanda Hancocks from Daventry

Glynn Jermin & Juno from Basingstoke LxGR Susan Hembrow from Taunton * Colin Ballinger from Daventry. Mrs Pauline Belton from Didcot. Mr & Mrs Richard & Katherine Lonsdale from Leamington Spa

Pam Jones & Waffle from Okehampton GRxL Kate Orchard from Exeter * Jenny Cooksley from Coventry. Mr Barry Holtom from Wellesbourne

Trevor Jones & Stacey from Totnes GRxGSD David & Susan Miller from Plymouth * Miss Karin Huntley from Coventry

Jeffery Kitson & Valerie from Bristol GRxL * Sheila Coton from Birmingham. Mrs Anne Watson from Kenilworth

Marilyn Lant & Millie from Exeter GRxGR * Clare Turton from Solihull. Mrs Jane Swain from Hinckley. Dr Kelly Curtis from Exeter

Christopher Long & George from Poole

GRxL Carrie Dickson from Bangor * Day from Droitwich. Tom & Sarah Hemus from Warwick

Lisa Marsden & Ashton from Saltash LxGR Sheelagh Sale from Winscombe * Elaine Aworth from Towcester. Mrs Sharon Broer from Coventry

Maura O'Connor & Karon from Torquay LxGR Matti Prow from Newton Abbot * Tina Warner from Warwick. Mrs Elizabeth Millard from Coventry. Mrs Zoe Summers from Exeter

John O'Mahony & Winston from Bristol GR Tim & Lesley Jeynes & Robson from Pershore * Judith Adlington from Coventry

Darren Palmer & Trekka from Weston Super Mare GRxL Ashley & Debbie Leeds from Sidmouth * Adrian Newitt from Leamington Spa. Mr & Mrs Pete Williams from Droitwich. Mr Andrew Becconsall from Leamington Spa

Glenn Palmer & Pax from Ottery St. Mary GSD George & Janice McCaffery & Boswell from Corsham * Steve & Jane Ekins from Leamington Spa. Mr & Mrs Sh Cox from Axminster

Mark Pickles & Hayley from Exeter LxGR Svenjei & Kathleen Eriksen from Torquay * Margaret Seales from Malvern. Mrs Kim Roberts from Stratford-Upon-Avon

Sarah Pidgeon & Webby from Bristol L Alison Evans from Worcester * Janet Paget from Rugby. Miss Amanda Hancocks from Daventry

Janet Purdy & Suzie from Camborne GRxL Nancy Cox from Sherborne * Janet Holt from Hinckley. Mrs Zoe Summers from Exeter

New partnerships

Anthony Quant & Hector from Frome LxGR Sheila Hemming from Evesham * Margaret Seales from Malvern. Mrs Kim Roberts from Stratford-Upon-Avon

Lynne Regan & Lola from Bristol LxGR Colin & Diane Sanderson from Plymouth * Michael Spelman from Coventry. Mr Graham Banks from Newton Abbot

Michael Stacey & Beamer from Paignton L Caroline Revell from Wellington * Elbert Loubser from Bicester

Jennifer Stafford & Nan from St Helier LxGR Peter Simms from Abertillery * Paul Dodd from Ross-on-Wye. Mrs Pamela Griffiths from Coventry

Leonard Trueman & Kye from Torpoint GR * Gillian Seager from Chipping Campden. Mr & Mrs Pete Williams from Droitwich. Ms Jannette Toomey from Bristol

Wendy Ware & Kiki from Bristol GRxGR Lynda Petit from Wallingford * Clare Turton from Solihull. Mrs Jane Swain from Hinckley

Philip John White & Raffles from Exeter GRxL David & Lynne Richards from Swansea

Elizabeth Wiscombe & Healey from Lyme Regis GRxGR Susan Dyson from Exeter * Barry from Leicester

Julian Woodley & Vince from Bodmin GR Iris Chapple from Martock * Regina Cardo from Kingswinford

Glasgow

Paul Edwards & Fred from Kilmarnock GRxGSD Julia Yarker from Edinburgh * Rosemary Jackson from Leamington Spa. Miss Karin Huntley from Coventry

Ellen Flannagan & Bill from Glasgow GR Margaret

Allsop from Carnoustie * Sheila Northover from Derby. Mrs Moyra Gibb from Larkhall

Stuart Gamble & Jenny from Airdrie LxGR * Julie Lloyd from Tamworth. Mrs Carol Clarke from Rushden

Ian Hamilton & Major from Lanark GRxGSD Carol Ray from Westhill * Rosemary Jackson from Leamington Spa. Miss Karin Huntley from Coventry

Brian Hunter & Brogan from Glasgow GRxL George Young from Dunfermline * Susan Golding from Evesham. Mr L Boylan from Coventry

Andrew Logue & Josh from Helensburgh LxGR * Christina Kearney from Shrewsbury

Ronald Lupton & Roscoe from Annan GRxL Sally McCaffrey from Strathaven * Yvonne Gunn from Banbury. Mrs Ruth Weatherall from Coventry

Christopher McCarrol & Inca from Glasgow GRxL * Yvonne Gunn from Banbury. Mrs Ruth Weatherall from Coventry

Jeanette Millar & Paul from Paisley LxGR Margaret Cullen from Larkhall, Sheena Kinnon from Ayr, Dorothy Galbraith from By Kilmarnock * Dawn Parsons from Wallingford

Deborah Robertson & Rye from Bishopbriggs GRxGSD Angus & Eleanore Adams from Banchory * Sheena Kemp from Atherstone. Mrs Catherine Egan from Lower Broadheath

Neil Rodger & Scout from Glasgow L John & Gus Davidson from Lockerbie * Robert Asker from Coventry

Claire Rundell & Lorne from Glasgow GRxL Christine Bell from Kilmarnock * Susan

Golding from Evesham. Mr L Boylan from Coventry

Ann Stewart & Orchid from Glasgow GRxL Desmond & Barbara McClune from Newtownabbey * Katherine Knight from Rugby. Mrs Anne Watson from Kenilworth. Mrs Anne Millar from Larkhall

Sanders Taylor & Rishka from Stevenston GRxGSD Mary Thomson from Forfar * Sheena Kemp from Atherstone. Mrs Catherine Egan from Lower Broadheath

Janice Urquhart & Vespa from Inverness L Hazel Hope from Inverurie * Helen Daw from Bedford. Mrs Lana Taylor from Stratford-Upon-Avon

Hull

Melissa Aicken & Lyric from Bourne STPxL Sherred from Shipley * Joan Brinkworth from Nuneaton. Mr & Mrs Landsberg from Milton Keynes. Ms Jo Caukwell from Beverley

Leanne Beadle & Roxy from Hull GR Ann Charlton from Stockton-on-Tees * Sharon Cranston from Daventry

Harry Bell & Rea from York LxGR Hilary & Stephen Vardy from Buxton * Elaine Aworth from Towcester. Mrs Sharon Broer from Coventry. Mr & Mrs Ryan & Briony Kearney from Leeds

Alison Bradley & Summer from Grantham GRxGR David & Kath Underwood from Telford * Amanda Adkins from Buckingham

David Brown & Vesper from Grimsby L * Helen Daw from Bedford. Mrs Lana Taylor from Stratford-Upon-Avon

Paul Bush & Timber from Cottingham GRxL * Janette Baines from Burton-on-Trent. Mr & Mrs Horton from Beverley

Darren Cutler & Marilyn from Lincoln GRxGSD Anne Jones from Wakefield * Sheena Kemp from Atherstone. Mrs Catherine Egan from Lower Broadheath. Mr & Miss Kevin & Stephanie Barkworth & Rostron from Leeds

Michelle Dodgson & Orla from Selby L * Mr Paul Sharp from Coventry. Mr & Mrs Amanda & Richard Johnson from Beverley

Carol Hall & Sacha from Driffield GR Keith Ord from South Shields * Sharon Cranston from Daventry

Peter Holdstock & Oscar from York LxGR * Jacquie Williams from Moreton-in-Marsh. Mrs Sharon Broer from Coventry. Mr Bradley Walker from Lincoln

Sally Lockwood & Logie from Sleaford GRxL * Marie Denscombe from Chipping Campden. Mr Paul Albrecht from Stratford-Upon-Avon

David Longman & Mark from Brough L Christine Spratt from Rugeley * Helen Daw from Bedford. Mrs Lana Taylor from Stratford-Upon-Avon

Anthony Ridgwell & Pippa from Skegness GRxL Colin & Lorraine Siddall from Worsley * Mrs Barbara Stone from Kenilworth

Andrew Scott & Onyx from Selby GRxL Alisdair Peter from Hexham * Kathryn Holt from Abingdon. Mrs Jane Swain from Hinckley. Mr & Mrs Rod & Rosemary Campbell-Blair from Driffield

Chris Scott & Treacle from Selby GRxGSD Maureen Martin from Sheffield * Sheena Kemp from Atherstone. Mrs Catherine Egan from Lower Broadheath

Mehdi Shahini & Ziggy from Hull L Ann Wackett from York * Jackie Ellison

from Coventry. Mrs Kwai White from Beverley

Alan Woodward & Yankie from Gainsborough L * Harriett Sproule from Worcester. Mrs Liz Gould from Evesham

Leeds

Toseef Ahmad & Pebbles from Huddersfield LxGR * Dawn Parsons from Wallingford. Mrs Margaret Sims from Wetherby

Andrew Beever & Mishka from Huddersfield GRxGSD Mark & Jackie Ayles from Bilston * Rosemary Jackson from Leamington Spa. Miss Karin Huntley from Coventry. Mrs Janet Gibson from Leeds

Audrey Coldwell & Corinne from Wakefield LxGR * Michael Spelman from Coventry

Hayley Day & Winter from Harrogate L * Christina Kearney from Shrewsbury. Mrs Liz Gould from Evesham

Angela Fearn & Victoria from Cleckheaton GRxL * John Starkey from Malvern. Mrs Jane Swain from Hinckley

Michael Hardwick & Irvin from Settle LxGR * Susan Webb from Rugby

Barry Hill & Chester from Halifax L

Anna Messruther & Diesel from Scarborough GRxL Jacqui Fairest from Sheffield * Amanda Hilton from Shipston-on-Stour. Mr & Mrs Paul & Kim Roberts from Leeds

Heather Moore & Gunner from Leeds LxGR * Julie Lloyd from Tamworth. Mrs Elizabeth Millard from Coventry. Mr & Ms Marcelo & Crina, Miranda & Heghes from Leeds

Mabel Pearson & Diesel from Brighouse L Beryl Dennison from Lancaster * Sue Walters

from Stourbridge

Charlotte Pickles & Bentley from Leeds GR * Sheila Northover from Derby. Mrs & Mrs Anna & Ben Bisco from Leeds

Catherine Shuker & Pepi from Leeds GR Frank & Hazel Harrison from Littleborough * Mr & Mrs Stephen & Catherine Baines from Leeds

Christopher Towers & Jaeger from Shipley LxGR Ian & Helen & Christopher Bewick from Chester Le Street * Christina Kearney from Shrewsbury

Mavis Tyas & Zara from Huddersfield L Pauline & Derek Hickey from Mancot * Jackie Ellison from Coventry

David Walker & Jerry from Pontefract GRxL Alison & Steven Anderson from Preston * D Ward from Rugby. Mrs & Mrs Anna & Ben Bisco from Leeds

Mark Whiteley & Dobbie from Bingley GRxGSD Laraine Knott from South Shields * Siobhan Haney from Coventry. Mrs Ruth Weatherall from Coventry. Mrs & Mrs Alan & Siobhan Smith from Leeds

Liverpool

Helen Brady & George from Liverpool GRxL Peter Fearnhead from Wirral * Amanda Hilton from Shipston-on-Stour

Rebecca Clarke & Rishton from Liverpool GRxL Helen Lance-Marsden from Liverpool * Kathryn Holt from Abingdon. Mrs Jane Swain from Hinckley. Ms Rachel Bristow from Liverpool

Victoria Dominguez-Perez & Heidi from Middlewich L Elaine Green from Liverpool * Jessica Macgregor from Warmington. Mrs Kim Roberts from Stratford-Upon-Avon. Miss Christine

Davies from Liverpool

Paul Donovan & Cooper from Winsford GRxL* Sian Evans from Rugby. Mr & Mrs Tony & Patricia Revell from Solihull

Christine Fletcher & Ruby from Southport GR * Sheila Northover from Derby. Miss Maria Foulkes from Liverpool

Mark Garlock & Carol from Warrington L Glynis Telford from Northwich * Mrs Ruth Weatherall from Coventry. Colette Dunbabin from Liverpool

John Haill & Rena from Warrington LxGR Ann Green from Malpas * Elaine Aworth from Towcester. Mrs Sharon Broer from Coventry. Ms Tracey Mayes from Warrington

Teresa Holtom & Deano from Winsford LxL Linda Stonley from Birkenhead * Claire Aluko from Northampton. Mr Kevin Taylor from Warwick. Mrs Cath Brocklehurst from Warrington

Brian Hudson & Preston from Leeds GSD Louise Wingate from Leasowe * Jacqueline Webb from Wolverhampton. Mrs Wendy Adams from Daventry. Ms Eileen Devlin from Liverpool

Hilary Kay & Yolo from Warrington LxGR Elaine Green from Liverpool * Dawn Parsons from Wallingford. Mrs Lisa Jones from Liverpool

Philip Marshall & Harvey from Liverpool GRxGR Andrew Jamieson from Wirral * Amanda Adkins from Buckingham

Joanne Matthews & Jordan from Liverpool GRxL Teresa Ferguson from Birkenhead * D Ward from Rugby

Christine Moore & Megan from Southport L * Celene Wilkinson from Chipping

Norton. Mrs Nicola Scarrott from Witney. Miss Christine Davies from Liverpool

Karolina Pakenaite & Bosley from Southport GRxL Lesley & Alan Batchelor from Macclesfield * Susan Golding from Evesham. Mr L Boylan from Coventry. Mr Luke Ryan from Liverpool

Stephen Porter & Bertie from Liverpool GR Jennifer & Geoff Wright from Congleton * Philip Maycock from Bromsgrove

Darren Powell & May from Liverpool LxGR Margaret Thompson from Knutsford * Julie Lloyd from Tamworth. Mrs Elizabeth Millard from Coventry. Miss Sarah Murphy from Prescot

James Prendergast & Arthur from Liverpool GRxGSD Jane Slater from Stafford * Amanda Turner from Shrewsbury. Mrs Catherine Egan from Lower Broadheath. Miss Nicky Goldthorpe from Leeds

Martin Ralfe & Diesel from Newton Le Willows GSD Julie Peel from Durham * Siobhan Haney from Coventry. Mrs Wendy Adams from Daventry. Mrs & Mrs Alan & Siobhan Smith from Leeds

Julie Rodaway & Cocoa from Bootle GRxL* Ian Hendry from Birmingham. Mr Paul Albrecht from Stratford-Upon-Avon

Jean Swann & Buddy from Macclesfield GRxL Susan & William Taylor from Wirral * Day from Droitwich

London

Kellie Arbour & Spring from London GRxL Sandra Thomas from Newbury * Janet Holt from Hinckley

Sultan Arel & Mandy from London L Sarah Wilson from Bromley * Valerie Veness from Sutton Coldfield. Mrs Liz

New partnerships

Gould from Evesham.
Mr Mo Hutchinson-
Pascal from London

Shaun Beetlestone &
Pasco from London GSD
* Steve & Jane Ekins from
Leamington Spa. Mr & Mrs
S H Cox from Axminster

Annette Brown & Rocky
from London L Brian
& Lynda Hardy from
Essex * Sue Walters
from Stourbridge. Ms
Nicola Harrison from
Woodford Green

Philomena Caine &
Jasmin from London L *
Linda Atkins from Stratford-
Upon-Avon. Mrs Sharon
Broer from Coventry

John Cusker & Aster
from London LxL Diana
Clarke from Swindon * Sue
Lancaster from Bedford

Sabeena De Saram &
Neima from Worcester
Park L Peter & Magdalen
Reina / Meade from
London * Christina
Sibbald from Wantage.
Mrs Kerry Greaves from
Leicester. Mr Ian Standing
from South Woodford

Linda Gaitskell & Quala
from Harrow LxGR
Jeanette, Joseph &
Cherkira Bau-Mann from
Romford * Emily Rousham
from Loughborough

Julian Griffen & Adam
from London L Emma
Whiting from Alton
* Janet Paget from
Rugby. Miss Amanda
Hancocks from Daventry

Jessica Holland & Stanley
from London GRxL
Malcolm Moore from
Sidcup * Ginny Turner
from Leicester. Mrs Ruth
Weatherall from Coventry.

Yurek Idzik & Ripley from
London GRxGR Martin &
Joady Mitchell from Bath
* Barry from Leicester

Steve Jones & Bobby
from Thames Mead
LxGR * Joan Raxter
from Redditch. Mr Kevin
Taylor from Warwick

Hilary Leacock & Edith
from Worcester Park
GRxL Norma & Terence
Dumbrell from Longfield
* Edwina Griffin from
Worcester. Miss Karin
Huntley from Coventry

Paul Manton & Carlo
from London GRxL
William Reid from
Inverurie * Mrs Barbara
Stone from Kenilworth

Sandra Messih &
Penny from London
LxGR * Suzanne Adey
from Derby. Mr Simon
Colwill from London

Paulette Obee & Bunty
from Orpington GRxL
Victoria Welsh from
Chippenham * Helen
Benson from Redditch.
Mrs Anne Watson
from Kenilworth

James O'Driscoll &
Disney from Aylesbury
GRxL * Tricia Ducker from
Blisworth. Mr & Mrs Pete
Williams from Droitwich.
Ms Sue Meadowcroft
from London

Michael Parsons &
Easton from Wallington
CCRxL John Hudd from
Colchester * Sarah Darnes
from Stratford-Upon-
Avon. Mr Adam Fincham
from Leamington Spa

Max Patton & Earl from
Bromley LxGR Edith
Preston from St Albans
* Tina Warner from
Warwick. Mrs Elizabeth
Millard from Coventry

Claire Pearson & Annie
from Orpington L
Stephen & Lorna Fryer
from Ashford * Ginny
Turner from Leicester

Alex Pepper & River
from West Wickham L
Myriam Steadman from
Welling * Douglas Watt
from Leamington Spa.
Miss Sarah Sheasby
from Bromsgrove

Donna Salmon &
Winnie from Dagenham
GRxL Christine Burkitt
from Woodbridge *

Tracey Cooze from
Northampton. Mrs Ann
Freeman from Banbury

Verity Smith & Luna from
London STPxL Michelle
Henman from Harlow
* Joan Brinkworth
from Nuneaton. Mr &
Mrs Landsberg from
Milton Keynes

Claire Sturrock &
York from London L
Margaret Hamilton
from Glasgow, James
Walker from Edinburgh
* Harriett Sproule from
Worcester. Mrs Liz
Gould from Evesham

Melissa Towers & India
from Wallington L * Jackie
Elliott from Warwick.
Mrs Lana Taylor from
Stratford-Upon-Avon

Dylan Turner & Tansy
from Ashford GRxL *
David Meadows from
Gloucester. Mr & Mrs Pete
Williams from Droitwich.
Miss Joanne Bell from Ilford

Jo Westlake & Dot
from Surbiton GRxL
Bob & Chris Croucher
from South Ockendon
* Sheila Coton from
Birmingham. Mrs Anne
Watson from Kenilworth

Daniel Williams & Zodiac
from Cardiff GRx * Lorraine
Johnson from Market
Harborough. Mrs Barbara
Stone from Kenilworth.
Mr Mo Hutchinson-
Pascal from London

Maidstone

Jacqueline Barton &
Lexie from Lower Dicker,
Hailsham GRxL Carolyn
Lantaff from Rayleigh

Andy Burchell & Rob from
Brighton LxGR David &
Tina & Samuel (Son) Shea
from Tonbridge * Stephen
Read from Birmingham

Mark Burt & Rex from
St Leonards-on-Sea
LxL * Miss Alison Pavis
from West Malling

Harriet Cox & Harry
from Nonington LxGR

Helen Revers from
Sevenoaks * Mrs Pauline
Belton from Didcot

Christie Hamilton &
Reuben from Bognor
Regis LxGR Stuart
Donaldson from Cupar
* Elaine Aworth from
Towcester. Mrs Sharon
Broer from Coventry

Linda Johnson & Iggy from
Margate GRxL Michael
& Shiralee Keane from
Chatham * Linda Atkins
from Stratford-Upon-Avon

Paul Lower & Jumble from
Brighton LxGR * Christina
Kearney from Shrewsbury

Barrie Penton & Bailey
from Ramsgate L
Suzanne Kingston from
Rochester * Colin Sargent
from Coventry. Mr &
Mrs Pete & Deborah
Ingram from Aylesford

David Rees & Rani
from Maidstone GRxL *
David Meadows from
Gloucester. Mr & Mrs Pete
Williams from Droitwich

Richard Schaverien &
Richie from Hove GRxL
Jackie & Edward Ralph
from Uckfield * Dianne
Merker from Malvern

David Sheen & Buckley
from Faversham L Brian
& Lesley Killick from
Sheerness * Catherine
Keenan from Halesowen

Christopher Smith &
Erwin from Seaford GRxL
Valerie Townsend from
Ashford * Susan Hollis
from Worcester. Mrs Jane
Swain from Hinckley. Mr
& Mrs Jason & Andrea
Mutton from Sittingbourne

Martyn Styles & Tessa
from Maidstone GRxGSD
Katie, Carolyn & Michael
Washford from Tenterden
* Jacqueline Webb from
Wolverhampton. Mrs
Ruth Weatherall from
Coventry. Mrs Heather
Redman from Maidstone

Anne Watson & Acorn
from Sevenoaks L Vanessa,
William & Aidan (Son)

Langston-Thompson from Woking * Ruth Mercer from Warwick. Mrs Sharon Broer from Coventry. Mr & Mrs Michael & Rachel Fanning from Maidstone

Manchester

Colin Adamson & Diamond from Horwich GRxGSD * Miss Karin Huntley from Coventry. Mrs Janet Aykroyd from Manchester

Francesca Balon & Sean from Leigh GRxL Lynda Hamblet from Bolton * Abigail Downham from Alcester. Mr & Mrs Pete Williams from Droitwich. Miss Janet Anderton from Wigan

Rosanna Bellwood & Ian from Bradford L Victoria Burnham from Stockport * Mrs Ruth Weatherall from Coventry. Mr & Mrs Sharon & Chris Sudlow from Bolton

Lisa Boocock & Duggie from Stockport GRxL Janice Lancaster from Manchester * Janette Baines from Burton-on-Trent. Mr Dave Sharman from Banbury. Miss Christine Farnworth from Manchester

Karen Brierley & Fairway from Cheadle GR * Jane Field from Warwick. Christopher & Nuria Trickey from Leamington Spa

Ann Clark & Andi from Bury LxL Jane & Allan Phipps from Bradford * Claire Aluko from Northampton. Mr Kevin Taylor from Warwick. Mr & Mrs Simon & Gillian Charnock from Bolton

Jonathan Cronshaw & Digit from Morecambe GR Carol Ashurst from Skelmersdale * Joyce Bartlett from Rugby. Mrs Ann Freeman from Banbury. Ms Janet Harper from Bolton

Paul Fish & Ike from Blackburn LxGR * Susan Webb from Rugby. Mrs

Shirley Jukes from Wigan Christopher Fisher & Bamber from Chorley GSD Susan Ballantyne from Lancaster * Rene Everett from Solihull. Mr & Mrs S H Cox from Axminster. Mr & Mrs Joanne & Phil Kershaw from Manchester

Catherine Gibson & Guy from Bury GRxL Barbara Helen Cox from Warrington * Robert Asker from Coventry. Ms Esther Holmes from Coventry

Joe Gilchrist & Bilbo from Bury GRxL David & Shirley Gorman from Stalybridge * Rachel Bagley from Coventry

Tony Howarth & Roary from Wigan L Rachel Branson from Nottingham * Harriett Sproule from Worcester. Mrs Liz Gould from Evesham

Alan Hughes & Mandy from Chorley GRxL * Jackie Evans from Droitwich. Mr Paul Albrecht from Stratford-Upon-Avon

John Jackson & Jake from Chorley LxGR Graham & Mary Moorcroft from Derby * Miss Gillian Knowles from Darwen, Ms Janet Harper from Bolton

Marian Jones & Solly from Douglas GR Susan O'Kelly from Bolton * Tammi Curran from Rugby. Mrs Ann Freeman from Banbury. Mrs Shirley Jukes from Wigan

Brian Lawson & Giles from Manchester GRxL * Steve Parsons from Cirencester. Mr & Mrs Pete Williams from Droitwich. Mr & Mrs Elaine & Lee Eckersley from Westhoughton

John Lawson & Lusi from Manchester GRxL Carol Holdcroft & Robert Butlin from Wolverhampton * Yvonne Gunn from Banbury. Mrs Ruth Weatherall from Coventry. Louise & Phil

Gannon from Leigh June Mather & Kay from Burnley L Elizabeth Ramage from Dalkeith * Patricia Dawson from Chipping Norton. Mrs Pauline Belton from Didcot. Mrs Beverley Jamieson from Warrington

Brenda Midgley & Bodie from Burnley GRxGR * Christine Roberts from Moreton-in-Marsh. Nicola & Thomas Baker from Newton-le-Willows

Marcheta Monroe & Tilly from Thornton-Cleveleys GRxGSD Margaret Stanton from Bury * Sheena Kemp from Atherstone. Mrs Catherine Egan from Lower Broadheath. Mr & Mrs Geoff And Sharon Sheelan from Bolton

Kate Natrass & Sparky from Heywood GR Barbara Milhench from Oldham, Ian & Anne Bromley from Oldham * Tammi Curran from Rugby. Mrs Ann Freeman from Banbury

Carole Pilkington & Phoenix from Bolton LxL Heather Lowe from Bolton * Claire Aluko from Northampton. Mr Kevin Taylor from Warwick

Derek Pritchard & Faith from Bury GRxL * Kathryn Holt from Abingdon. Mrs Jane Swain from Hinckley. Mr & Mrs John & Anne Starr from Wigan

Sid Pritchard & Oscar from Bury LxGR * Christina Kearney from Shrewsbury. Miss Janet Anderton from Wigan, Sabrina & Neil Curry & Bibby from Worsley

Rhiannon Quirk & Sandy from Isle Of Man GRxL Alan Turner from Bolton * Rachel Bagley from Coventry. Mr & Mrs Allan & Louisa Siderfin from Bolton

Martin Rigby & Emerald from Preston GRxGSD David Wells from Leyland

* Helen Sergison from Dudley. Mrs Anne Watson from Kenilworth. Mrs Zoe Whiteside from Bolton

Kevin Rudge & Bev from Walsall GRxL Valerie Shawcross from Buckley * Mrs Barbara Stone from Kenilworth. Mr Michael & Hannah Cooney & Kesterton from Hindley

Janet Salt & Jackson from Stockport GRxL Julie Hulme from Knutsford * Aylott from Birmingham. Stephen Bate & Rachel Ord from Leigh

Alison Skapars & Iris from Leyland GRxL Gordon John McGregor from Tayport * Clare Turton from Solihull. Mrs Ruth Weatherall from Coventry

Margaret Vickers & Jester from Preston GRxL Eileen & Chris Howes from Altrincham * D Ward from Rugby

Newcastle

Margaret Ambrasas & Bonnie from Gateshead LxL Clare Murray from Carlisle

John Atkinson & Grace from Carlisle GRxL Caroline Power from Glasgow * Robert Asker from Coventry. Ms Esther Holmes from Coventry

Jonathan Benson & Dexter from Middlesbrough LxGR Hugh & Maggie Gibson from Ballater * Lisa Hall from Redditch. Mrs Ruth Weatherall from Coventry

Janet Bonallie & Waffle from Sunderland GRxL Elizabeth Tierney from Strathaven * Helen Cooper from Leamington Spa. Mrs Anne Watson from Kenilworth

Peter Carling & Murphy from Sunderland GRxL Kitty Shaw from North Berwick * Abigail Downham from Alcester. Mr & Mrs Pete Williams from Droitwich

New partnerships

Andrea Edwards & Jade from Whitley Bay LxGR
Tom & Ann Duly from Dunfermline * Christina Kearney from Shrewsbury

Mrs Chris Ellis & Tara from Washington LxGR * Peter Turton from Coventry

Maureen Gillman & Nelson from Newcastle-Upon-Tyne LxGR George & Lynn Kennedy from Arbroath, Sam & Dorothy Fleming from Bathgate * Julie Lloyd from Tamworth. Mrs Elizabeth Millard from Coventry

Nora Green & Cassie from Seaham L Alan Knott from Dumfries* Anthony & Susan Stobart from Solihull. Mrs Dot Robinson from Middlesbrough

Neil Griffiths & Hayley from Hartlepool GRxL
Alison Arnott from Denny, Margaret Hyslop from Dunfermline * Mrs Catherine Egan from Lower Broadheath. Mrs Rebecca Reah from Newcastle Upon Tyne

Angus Huntley & Ebony from Newcastle Upon Tyne GRxGSD Marisa McDermott from Stirling * Sharon Faulkner from Coventry. Mr Paul Albrecht from Stratford-Upon-Avon

Lorna Jones & Oyster from Darlington GRxL
Alex & Frances Kemp from Livingston * Kathryn Holt from Abingdon. Mrs Jane Swain from Hinckley. Ms Alison Binalle from Newcastle Upon Tyne

Ron King & Biscuit from South Shields GRxGR
Ricky Flanagan from Belfast * Christine Roberts from Moreton-in-Marsh

Paula Kirkbride & Zebedee from Carlisle GSD Moya Jones from Stourport-on-Severn, Carole Tavender from Rugby * Mrs Joanne Careless from Leamington Spa. Mr John Newton from Degandy

Darron McCaul & Denny from Houghton-le-Spring GRxGSD Stewart & Gill Geddes from Edinburgh * Helen Sergison from Dudley. Mrs Anne Watson from Kenilworth. Ms Linden Cartwright from Newcastle Upon Tyne

Stephen Moody & Arthur from Choppington L James & Helen Ellis from Larbert, Aileen Murphy from Dunfermline * Nicola Wilmot from Kissingbury. Mrs Pamela Griffiths from Coventry. Mrs Angela Dawson from Blyth, Mrs Rebecca Reah from Newcastle Upon Tyne

Jillian Munro & William from Chester Le Street L, Fiona Malcolm from Kilmarnock * Samantha Hanley from Telford

Michael Oyston & Gareth from Bishop Auckland GRxGR Daniel Rooney from St Andrews * Amanda Adkins from Buckingham. Mrs Jen Florence from Carlisle

Gary Quinlan & Flint from Blaydon On Tyne L Alan Kerr from Tillicoultry * Colin Sargent from Coventry. Mrs Sharon Broer from Coventry

Lisa Rankin & Bronx from Yarm GSD Julia & Brian McClellan from Leatherhead

Glynis Rowland & Elsa from Blyth GRxL * Pamela Moody from Leicester. Ms Esther Holmes from Coventry. Miss Lindsay Carmichael from Newcastle Upon Tyne

David Spencer & Morton from Stockton-on-Tees LxGR Kevin & Kerrie Moody from Biggar * Jacquie Williams from Moreton-in-Marsh. Mrs Sharon Broer from Coventry

Jillian Taylor & Lexi from Sunderland STPxL * Joan Brinkworth from Nuneaton. Mr & Mrs Landsberg from Milton Keynes

Terence Tierney & Sami from Newcastle Upon Tyne GR Edna Reid from East Kilbride * Sharon Cranston from Daventry

Sarah Weaver & Summer from Morpeth GR
Catherine Reid from Strathaven * Tammi Curran from Rugby. Mrs Ann Freeman from Banbury

Laura Jane Welling & Thor from Stirling LxGR * Peter Turton from Coventry. Mrs Karen Piper from Newcastle Upon Tyne

Nottingham

Pauline Aird & Cassie from Doncaster L Beverley Kempson & Miss Fiona Brown from Hexham * Sue Walters from Stourbridge

Kathleen Allott & Orchid from Rotherham GRxL Amanda Senior from Newcastle Upon Tyne * Caroline Butler from Evesham. Lorna Cudmore from Sheffield

Sarah Bennett & Hannah from Sheffield GRxGR
Richard & Allison Baker from Milton Keynes * Sharn Woodgate from Chipping Norton. Tom & Sarah Hemus from Warwick

Michael Bestwick & Tommie from Belper GRxGSD Jean Ruff from Redcar * Mrs Catherine Egan from Lower Broadheath. Mr Peter Watts from Matlock

Amanda Bollington & Mabel from Nottingham LxGR * Lisa Partridge-Davis from Cleeve Prior. Mrs Carol Joyes from Nottingham

Liam Flynn & George from Sheffield GRxGR J Pearson from York * Amanda Adkins from Buckingham

Cindy Gell & Jewel from Chesterfield LxGR Margaret Reid from Stockton-on-Tees * Christina Kearney from Shrewsbury

Rose Gibbings & Vici from Retford GR
Lynne Hampson from Fleetwood * Ian Hendry from Birmingham. Mrs Catherine Egan from Lower Broadheath

Kathryn Greenwood & Beryl from Sheffield LxGR * Helen Elbourne from Stratford-Upon-Avon. Rev Craig Grocock from Leamington Spa. Mr Roger Steele MBE from Sheffield

Gavin Griffiths & Utah from Nottingham LxGR
Bev Cole from Stockton-on-Tees * Stephen Lines from Leamington Spa. Mr Marcus Faulkner from Warwick

Chris Harrington & Odin from Derby L Lee & Donna Brewster from Alfreton * Mr Paul Sharp from Coventry. Mr Iain Armstrong from Sheffield

Louann Kent & Ugo from Derby GRxL Ian & Lesley Cave from Hexham * Margaret Creed from Stourbridge

Sandra Kingshott & Lucy from Barnsley L

Edward Kitchen & Brier from Mexborough GRxL * Katherine Knight from Rugby. Mrs Anne Watson from Kenilworth. Mr Alan George Bone from Sheffield

Diane Lair & Oak from Glossop LxGR Alan & Sue Ward from Retford * Jacquie Williams from Moreton-in-Marsh. Mrs Sharon Broer from Coventry. Mr & Ms Marcelo & Crina, Miranda & Heghes from Leeds

Lynn Margrave & Murray from Doncaster GRxGSD Ethne Brown from South Shields * Rosemary Jackson from Leamington Spa. Miss Karin Huntley from Coventry

Judith Mills & Joan from Barnsley GR Richard & Susan Mason from

Dronfield * Philip Maycock from Bromsgrove

Katy Montgomery-Johnson & Daisy from Newark GRxL * John Starkey from Malvern. Mrs Jane Swain from Hinckley. Jenny Craggs & Hayden Faulds from Sheffield

David Newsham & Bridie from Nottingham GRxGSD Richard & Barbara Floyd from Sheffield * Amanda Turner from Shrewsbury. Mrs Catherine Egan from Lower Broadheath

John Nolan & Jim from Sheffield GRxL David & Emma Flook from Rochdale * D Ward from Rugby

Christopher Odell & Amber from Nottingham LxGR * Helen Elbourne from Stratford-Upon-Avon. Rev Craig Grocock from Leamington Spa

Jeanette Stevens & Koko from Newark GRxL * Mr & Mrs Pete Williams from Droitwich. Mr Tony Kay from Sheffield

Anthony Storer & Barclay from Nottingham LxGR Alison Tanner-Davies from Wirral * Peter Turton from Coventry. Ms Maria Deegan from Liverpool

Shannon Walker & Pip from Matlock L Jean Greenway Cole from Buxton * Brian Mullis from Coventry. Miss Amanda Hancocks from Daventry. Mrs Helen McNamara from Nottingham

Jamie Weller & Fred from Nottingham L Madeline & Vic Baker from Craven Arms * Mr Paul Sharp from Coventry. Mrs Diana Starr from Nottingham

Liam White & Archie from Barnsley GRxL * Kathryn Holt from Abingdon. Mrs Jane Swain from Hinckley. Mr & Mrs Andrew & Susan Page from Leeds

Kay Yallup & Fudge from Sutton-in-Ashfield L Angela Lawton from Nottingham * Jackie Ellison from Coventry

Peterborough

Asha Bardon & Tate from Dereham L Sally Robinson from Camberley * Jackie Elliott from Warwick. Mrs Lana Taylor from Stratford-Upon-Avon

Beverley Beal & Toby from Thetford L * Douglas Watt from Leamington Spa. Miss Sarah Sheasby from Bromsgrove

Graham Darken & Ellis from Dereham LxGR * Joan Raxter from Redditch. Mr Kevin Taylor from Warwick. Mr & Mrs Peter & Jennie Smith from Dereham

Glenwynne Egan & Dora from Downham Market GRxGR * John Rogers from Bromsgrove

Brian Franks & Bentley from Norwich L * Colin Sargent from Coventry. Mr & Mrs Elliott & Deborah Costa from Woodford Green, Mrs Victoria Warley from Norwich

Lisa Frobisher & Fudge from Peterborough LxGR Patricia Davis from London * Stephanie Hill from Warwick

Keith Gilding & Bryony from Dereham GRxL Ros & Dean Guy from Woking * David Meadows from Gloucester. Mr & Mrs Pete Williams from Droitwich

Rita Herrett & Bobby from Cambridge LxGR Deborah Butler from Romford * Leslie Johnson from Redditch. Mrs Pauline Belton from Didcot

Lynne Hester & Saffron from Cambridge LxGR * Peter Turton from Coventry

Paul Johnson & Rose from Newmarket CCRxL Sophia Atkins from Woking * Sarah Darnes from Stratford-Upon-Avon. Mr Adam Fincham from Leamington Spa

Kathryn Lindgren & Una from Peterborough GRxGR Stacey Moar from Cambridge * Ingrid Moss from Warwick. Mrs Ann Freeman from Banbury. Mr Robert Timms from Norwich

Fran Ling & Clover from Ipswich LxGR Emma Caudell from Southampton * Mrs Pauline Belton from Didcot

Tanya Maggs & Rebecca from Ipswich L Andrew & Lesley Massey from Solihull * M Whatman from Banbury. Rev Craig Grocock from Leamington Spa

Melvyn Maidment & Gus from Haverhill GRxGR Sibylle Hippe from Banbury * Barry from Leicester

Amanda Maney & Lewis from Ipswich GR * Coral Williams from Evesham

Fiona McGregor & Winnie from Harleston LxGR Nicola Frewin from Wokingham * Joan Raxter from Redditch. Mr Kevin Taylor from Warwick

Kevin Ross & Bowler from Ipswich LxGR Yvonne Woodcock from Littlehampton * Isard from Coventry. Mrs Elizabeth Millard from Coventry

Simon Stokes & Mayne from Norwich LxGR Jan Caulfield from Halstead * Claire Webster from Sutton Coldfield

Roger Wilson-Hinds & Quigley from Peterborough GRxGR Patricia Twite from Chelmsford * John Rogers from Bromsgrove

Helen Wold & Buckles from Felixstowe LxGR Joan & Richard Chamberlain from Romford * Leslie Johnson

from Redditch. Mrs Pauline Belton from Didcot

Reading

Carol Abram & Rafe from Staines-Upon-Thames L Maureen Walker from Loughton * M Whatman from Banbury. Rev Craig Grocock from Leamington Spa

Glenn Baldock & Zia from Epsom LxGR Terri Baker from Swindon * Peter Minty from Cheltenham. Mr & Mrs Matthew & Amy Durman from Reading

Ray Bell & Rickie from Oxford GRxL Elaine Goddard from Hornchurch * Karen Stanton from Southam. Mrs Catherine Egan from Lower Broadheath

Emma Boswell & Victa from Billingshurst L Helen & Tierney Grover from Sittingbourne * Jackie Elliott from Warwick. Mrs Lana Taylor from Stratford-Upon-Avon

Jennifer Bottom & Stamp from Reading GRxGR * Sue Wilkins from Rugby. Mrs Jane Swain from Hinckley. Miss Cressi Barker from Reading

Terry Brady & Yasmin from Milton Keynes L Sheila Watt from Brechin * Harriett Sproule from Worcester. Mrs Liz Gould from Evesham

Stephen Caro & Jean from Oxford LxGR * Jonathan Gadsby from Coventry. Miss Fay Keech from Coventry. Mr & Mrs Frank & Anne Westgarth from Reading

Alison Clarke & Ann from Newbury LxGR Barry Aspinall from Haddington * Helen Elbourne from Stratford-Upon-Avon. Rev Craig Grocock from Leamington Spa

Sally Davies & Rex from Didcot GSD * Trudy Evans from Coventry. Mrs Wendy Adams from Daventry

Nicole Day & Lily from Milton Keynes LxL * Mrs Wendy Truman from Stratford-Upon-Avon

Lena Jury & Daisy from Reading LxGR Elisabeth & Guy Meakin from Woking * Helen Cookes from Nuneaton. Mr Marcus Faulkner from Warwick

Ennis Killip & Yoshi from Reading GRxL John Cooper from Chatteris * Mrs Ann Freeman from Banbury. Mr Neil Martin from Reading

Michael McKeganey & Jet from Crawley GRxGSD Tony Jose from Woodall Spa * Siobhan Haney from Coventry. Mrs Ruth Weatherall from Coventry. Ms Anne Heathcock from Rudgwick

Anita Mort & Philby from Hungerford GRxL Stan & Diana Breed from Pevensey * Anthony Williamson from Northampton. Mrs Jane Swain from Hinckley. Mr & Mrs Ben Poole & Jennifer Lomas from Reading

Brett Rogers & Joy from Reading GRxL Rachel Spillane from Newbury * Miss Tracy Suff & Ewan Whitmey from Reading. Mr & Mrs June & Phil Daniels from Reading

Andrew Taylor & Gilbert from Milton Keynes GRxGSD * Miss Karin Huntley from Coventry

Francis Tipton & Victoria from Didcot L * Helen Daw from Bedford. Mrs Lana Taylor from Stratford-Upon-Avon

Molly Watt & Isabella from Maidenhead L Rowena Spence from St Andrews * Mrs Ruth Weatherall from Coventry

Lesley Wellbelove & Honey from Staines GRxL * Cindy McCreary from Kidlington

Shrewsbury

Christine Barrow & Dusty from Smethwick GR Raymond Walsh from Burnley * Sheila Northover from Derby

Helen Davies & Woody from Shrewsbury GRxGSD Joyce Sydserff from Sheffield * Helen Sergison from Dudley. Mrs Anne Watson from Kenilworth

Mandy Drew & Penny from Halesowen LxGR Frank & Hazel Harrison from Littleborough * Elizabeth Sagar from Warwick. Mrs Wendy Truman from Stratford-Upon-Avon

Victoria Dwyer & Skye from Shrewsbury GRxL David & Myra Brown from Lanark, Dorothy Galbraith from Kilmarnock * Robert Asker from Coventry. Ms Esther Holmes from Coventry, Michael & Jill Armer from Downpatrick

Patricia Griffiths & Uschie from Shrewsbury LxGR * Stephen Lines from Leamington Spa. Mr Marcus Faulkner from Warwick

Liz Hammer & George from Smethwick GRxL * Jacki Hauenstein from Telford. Mr Paul Albrecht from Stratford-Upon-Avon

Julie Harris & Maisie from Walsall GRxGR * Ingrid Moss from Warwick. Mrs Ann Freeman from Banbury

Beverley Jones & Val from Wolverhampton GR * Sharon Cranston from Daventry. Mr Andrew Abbott from Shrewsbury

Andrew Laws & Leo from Stafford GSD Margaret Mattingly from Morecambe * Gloria Jayne Walton from Birmingham. Mr & Mrs Sh Cox from Axminster

Margaret McKinven & Emily from Craven Arms L Wendy Bell from Redcar * Helen Daw from Bedford.

Mrs Lana Taylor from Stratford-Upon-Avon

Alice McLuskie & Connie from Dudley GRxL * Amanda Hilton from Shipston-on-Stour

Brian Moores & Paddy from Halesowen GR Martyn & Beverley Butterworth from Littleborough

Dorothy Morris & Edna from Telford GRxGR Jacqueline Oliphant from Whitley Bay * Jackie Evans from Droitwich

Matthew Oakley & Jaffa from Brierley Hill L Samantha Atkin from Durham * Jill Wassell from Warwick. Mrs Ruth Weatherall from Coventry

Nicola Owen & Kit from Wolverhampton L Fiona Gunn from Sutton-in-Ashfield * Patricia Dawson from Chipping Norton. Mrs Pauline Belton from Didcot

Linda Pugh & Buddy from Stoke LxGR * Dawn Parsons from Wallingford

Deborah Roberts & Poppy from Stoke-on-Trent L * Joan Perry from Southam. Miss Fay Keech from Coventry

Robert Rowley & Tommie from Wolverhampton GRxL Wendy Jackson from Bury * Mrs Barbara Stone from Kenilworth

Aletea Sellers & Bradley from Smethwick L

Alan Silvester & Gordy from Telford LxGR David Astin from Wigan * Helen Elbourne from Stratford-Upon-Avon. Rev Craig Grocock from Leamington Spa

David Smith & Eden from Halesowen GRxGSD Ann Burdett from Sheffield * Siobhan Haney from Coventry. Mrs Ruth Weatherall from Coventry. Mr Andrew Abbott from Shrewsbury

Lee Taylor & Otley from Tamworth GRxGR Alan & Mrs Kathleen Pick from Keighley, Elaine Kemp from Blackburn * Amanda Adkins from Buckingham

Wayne Thompson & Milton from Rugeley GRxL * Abigail Downham from Alcester. Mr & Mrs Pete Williams from Droitwich

Derek Upton & Bonnie from Lichfield LxGR * Elizabeth Sagar from Warwick

Tina Wain & Macca from Hanley GR Mary Cheadle from Stafford * Christine Fowler from Southam

Patrycja Zukrowska & Deacon from Bilston GRxL Ron Whitham from Rochdale * Tricia Ducker from Blisworth. Mr & Mrs Pete Williams from Droitwich

Southampton

Shirley Blake & Bewley from Salisbury GR Patricia Canning from Southampton * Linda Mallette from Worcester. Mr & Mrs Vernon & Lynda Middleton from Stockbridge

Chantal De Rosa & Hope from St Helier L * Sue Walters from Stourbridge. Mr & Mrs Graham & Sandra Jeffrey from Halstead

Roger Duke & Landy from Lymington LxGR * Stuart Toulson from Bridgnorth. Mrs Elizabeth Millard from Coventry

Mark Gevaux & Tina from Trowbridge GRxL Ellen Holt from Tewkesbury * David Meadows from Gloucester. Mr & Mrs Pete Williams from Droitwich

Barry Gilbert & Janice from Ferndown GRxGSD Lorna Money from Glasgow * Mrs Catherine Egan from Lower Broadheath. Mrs Pauline Williams from Warwick

Paul Hanman & Dan from Swindon GRxL * Sheila Coton from Birmingham. Mrs Anne Watson from Kenilworth

Brett Lamplough & Stevie from Cowes GRxGSD * Miss Karin Huntley from Coventry

Susan McBride & Zorro from Salisbury LxGR Dick & Jacqui Richomme from Jersey * Peter Minty from Cheltenham

Tom McNulty & Toby from Southampton LxGR Sylvia Waite from Exeter * Leslie Johnson from Redditch. Mrs Pauline Belton from Didcot. Emma Cooper from Leamington Spa

Isabel O'Rourke & Gilly from Southampton GRxL Sandra Arthur from Penarth * Nicola Wilmot from Kissingbury. Mrs Catherine Egan from Lower Broadheath

Adrian Tamasan & Jogle from Bournemouth GRxL Sarah Absolom from Milton Keynes * Jill Wassell from Warwick. Mrs Marie Morse from Banbury

Glynis Trevett & Freddie from Sturminster Newton LxGR Judith Walling from Plymouth * Colin Ballinger from Daventry. Mrs Pauline Belton from Didcot. Mr & Mrs Steve & Emma White from Eastleigh

Nicola West & Lily from Romsey LxGR Julie Matthews from Southampton * Peter Minty from Cheltenham. Ms Angie Dempster from Andover

Justin Wright & Ned from Salisbury GRxGR Lyndsey Bardsley from Gosport * Graham Rainey from Coventry

Welwyn Garden City

Lucy Applegate & Nacho from Bedford L Pat Tuffs from Dartford * Elbert Loubser from Bicester

Nigel Ashby & Olaf from Welwyn Garden City GRxL Julie Brown from Warwick. Severine Godson from Banbury * Karen Stanton from Southam. Mrs Catherine Egan from Lower Broadheath. Mrs Sue Cox from Leamington Spa, Mr Richard Webb from Hornchurch

Susan Bambury & Scout from Benfleet GRxL Marjorie Kelman from Aberdeen * Pamela Moody from Leicester. Ms Esther Holmes from Coventry. Mrs Alison Thompson from St Albans

Michael Bennett & Usher from Brentwood GRxL * Sally Weston from Birmingham. Miss Karin Huntley from Coventry

Stephanie Christopherson & Laura from Stevenage L Margaret & Dave Mardell from Rochester * Elbert Loubser from Bicester. Mrs Alison Thompson from St Albans

David Evans & Chip from Colchester GSD Kim Stacey from Billericay

Jacqui Fenton-Collins & Happy from Bushey GRxGR Linda Hole from Bristol * Sharn Woodgate from Chipping Norton

Steven Gibbinson & Kasper from Hockley LxGR Lindsay Dyer from Cambridge * Reaney from Nuneaton. Mrs Nicola Scarrott from Witney. Mrs Lorraine Leith from Loughton

Eric Heslop & Denton from Southend-on-Sea GRxGSD Elaine Cole from Colchester * Mrs Catherine Egan from Lower Broadheath

Huseyin Hurbas & Gino from Grays GRxGR * Barry from Leicester

Julie Norris & Shazzy from Watford GRxGSD Daphne Swain from Woodford Green * Miss Karin Huntley from Coventry. Mrs Lesley Gilbert from St Albans

Raymond Paul Palcic & Indigo from Dunstable LxGR Penny & Robert Pattison from Thatcham * Mrs Pauline Belton from Didcot. Mrs Debbie Harris from Harlow

Veer Patel & Arthur from Clacton-on-Sea GRxGR Gillian Harrison from Manningtree * Clare Turton from Solihull. Mrs Jane Swain from Hinckley

Alexander Ramzan & Blossom from Colchester GRxL Violet Turner from Waltham Cross * Mrs Anne Watson from Kenilworth, Mr Stephen Hathaway from St Albans

Jack Read & Kirby from Witham GRxL * Susan Hollis from Worcester. Mrs Jane Swain from Hinckley

Karen Rice & Roxy from Stanford-le-Hope L Jane Boyce from Bishop's Stortford * M Whatman from Banbury. Rev Craig Grocock from Leamington Spa

Phil Rutter & Humbug from Luton L Brenda Weaver from Brentwood * Jessica Macgregor from Warmington. Mr Paul Sharp from Coventry. Mr Stephen Hathaway from St Albans

Craig Scott & Mercer from Stevenage LxGR John & Janet Wallace from Edinburgh * Lisa Partridge-Davis from Cleeve Prior. Mrs Debbie Harris from Harlow

Mike Tetley & William from St Albans L Fiona McKervey from Stonehaven * Jackie Page from Coventry. Mrs Pauline Belton from Didcot. Mrs Nicola Shillum from St Albans

Jolene Thompson & Zena from Basildon L Ted Blundell from Clacton-on-Sea

Kelsey Trevett & Lacey from Watford LxGR * Peter Minty from Cheltenham

Anthony Webb & Sammy from Bishops Stortford GRxL * Amanda Bourne from Nuneaton. Mr Paul Albrecht from Stratford-Upon-Avon. Steph Thompson from Norwich

Thank you

Sometimes a guide dog owner may choose not to have their details included in Forward. We still want to show how important the volunteers are that helped that dog to become a life-changing guide dog. A huge thank you to the following people who did just that:

Derek Mattocks from Doncaster

and

Samantha Bevan from Cambridge

Letters

All aboard for some puppy training

I'd like to thank NorthLink Ferries for being so welcoming to local puppy walkers and their puppies for regular training and familiarisation sessions at Aberdeen Ferry Terminal. Particular thanks must go to their Customer Service Manager, Fiona Anderson, who took the time to visit a puppy walking class to learn more about what we do, so she can ensure that visits to the terminal are as useful to our guide dog puppies as possible.

When visiting the terminal, pups and their handlers get

the chance to negotiate the busy yards where traffic comes in, carrying livestock and goods to and from Orkney and Shetland. A tour around one of the ferries challenges the skills and nerves of the pups, who bravely take the various floor surfaces in their stride. They also climb and descend steep, open-tread stairs (where understandably some pups need extra help) as they traverse the decks. A tour around the sleeping quarters, restaurants, bars and cinema usually culminates with a

well-earned cuppa. We are very grateful to NorthLink Ferries for providing this opportunity for pups and handlers.

Kind regards,

Lynda Kingham,

Puppy walker



Caption competition

Cody was out fundraising with the West Fife fundraising group at the time, but **what do you think he is thinking or saying to Roary?** Help us caption this photograph. Send your captions to: **Forward, Guide Dogs, Hillfields, Burghfield Common, Reading RG7 3YG** or email **forward@guidedogs.org.uk** with your name and address. There's a £10 Marks and Spencer voucher for the winner.



The winner of the last caption competition was **Linda Watts**, from North Lincolnshire, with: **"Hello Jacko. No matter how big I grow, I will always look up to you!"** Congratulations – we hope you enjoy your voucher.



Competition rules

This competition is open to anyone resident in the UK, except employees of the Guide Dogs for the Blind Association, their families and anyone connected with the competition. No purchase necessary. Proof of posting cannot be accepted as proof of delivery. No responsibility can be accepted for entries delayed, damaged or mislaid or wrongly delivered. Illegible entries will be disqualified. Only one original entry is allowed per envelope. The winners will

be notified by either post or telephone and the results will be published in the next issue of the magazine. The winners must agree to the publication of their names, photographs and any publicity, if requested. In all matters concerning the competition the Editor's decision is final. No correspondence can be entered into. Entry implies acceptance of the rules.

The closing date for the competition is **31 August, 2018.**

More than £250,000 raised for Guide Dogs through Petplan



This free cover provides peace of mind to owners, knowing that help is available with the cost of veterinary treatment should their dog become ill or injured in those first few weeks.

If the owner chooses to take out a full policy with Petplan through Guide Dogs before their free cover expires, 10% of their annual premium is given back to Guide Dogs and again every time the policy is renewed*. As a result, since 2001, we've given more than £250,000 to Guide Dogs by working with the charity in this way.

Pet insurance is an important part of being a responsible pet owner, and we're proud to work in partnership with Guide Dogs to provide four weeks' free insurance to all of their retired guide dogs as they settle into their new homes.

To find out more about our partnership, visit www.petplan.co.uk/guidedogs.

*Only applicable without a break in cover. No cover is provided for pre-existing conditions. Terms, conditions and excesses apply and may be varied on renewal. Petplan is a trading name of Pet Plan Limited and Allianz Insurance plc. Guide Dogs is an Appointed Representative of Pet Plan Limited but is not part of the Allianz (UK) Group.

Introducing Little Sharers

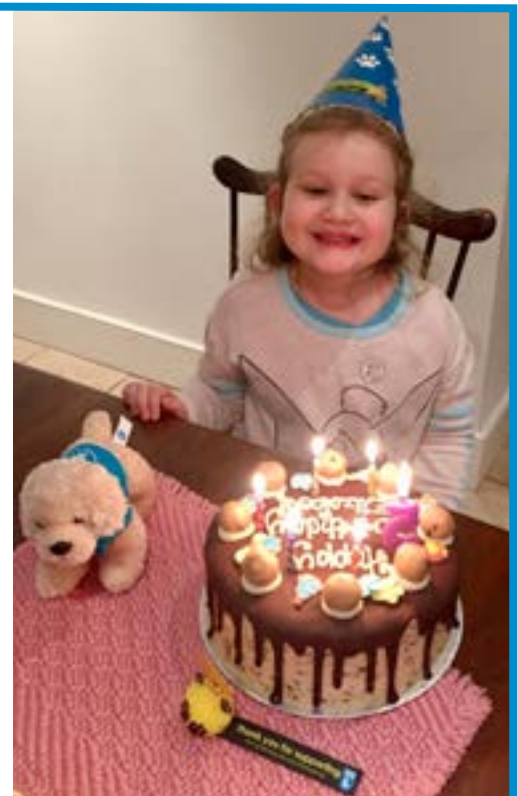
'Little Sharers' is a free online children's party planning website that has a charitable gift programme. Little party planners can set up their party online, send e-invites and messages to guests where parents can then contribute to a gift fund.

What does this mean? Well, the birthday child gets a gift they really want but it also encourages sharing, 50% of the fund goes to the perfect gift and the other 50% to the little sharer's chosen charity.

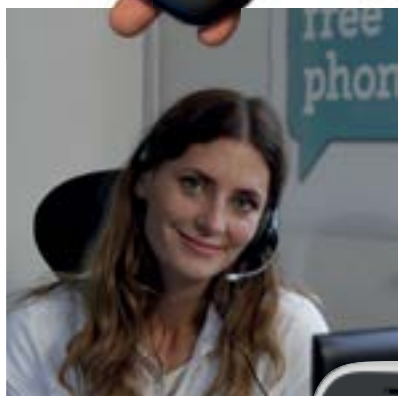
In March, the lovely and amazing Elizabeth celebrated her fifth birthday with a big 'Little Sharers' party and raised a magnificent £419.76 for Guide Dogs!

Thank you so much for your generosity, Elizabeth. Your donation can now help us to buy 16 of our iconic white guide dog harnesses, or support a guide dog partnership for a massive 84 days! You are a star!

Please visit www.littlesharers.com if you would like to find out more.



fuss free phones



SAVE
£50

Available from



The personal mobile phone service which gives independence for the visually impaired.

Just press the button on the back of an easy to use mobile phone to be connected to a friendly, UK based telephonist who can put you through to anyone you want. Telephonists will type texts and call back to read replies. They will even look up information on the internet.

The service costs just £25 a month (£20.83 exc VAT) for 600 minutes of talktime, unlimited texts and full use of the telephonist service.

It also includes the unique no nuisance calls service: only people on your list can call you directly. All others are first directed to a telephonist who assesses the call, only connecting legitimate callers.

As a special offer to Forward readers FUSS FREE PHONES are selling the Doro 6520, desktop charging station and the first month of service for just £79 (£65.83 exc VAT), saving over £50 on rrp. There is no contract you can cancel at any time.

The Doro 6520 is designed for the visually impaired with clear text on well separated black buttons on the white phone and has speaking keys which read out numbers as you enter them.

Call free **0800 8456789**
fussfreephones.com/guidedogs